



WWW.AEOLUSTIRES.CO



AEOLUS TYRES
Technology Meets Performance



1965 - 2015
WORLD-CLASS QUALITY
GLOBALLY-RECOGNIZED BRAND

PRODUCT MANUAL

TRUCK & BUS RADIAL TYRES

HANKSUGI JAPAN TIRE LTD. B26B, THE REGALIA BLDG. NO.29
XIANCHENG RD.PUDONG NEW AREA, SHANGHAI CHINA 200122.
PHONE CHINA: +86 21 50813651 PHONE USA: +1 561 340 9030

WWW.AEOLUSTIRES.CO

WWW.AEOLUSTIRES.CO

Chairman's Introduction



Distinguished Friends,

In this brochure, we hope to give you a clear impression of our enterprise and products, an appreciation of our commitment to environmental responsibility, and an understanding the ultimate goal of all our endeavors – wholeheartedly providing our customers with world-class service and high quality products.

Aeolus Tyre Co, Ltd was founded in 1965, ranking 26th among the world's tyre manufacturers. Our accomplishments are numerous: the first manufacturer to achieve 100% green and fuel-saving radial tyre production, the most popular Chinese brand of TBR in the EU, the preferred strategic supplier of Dong Feng Trucks (the largest commercial truck manufacturer in China), the National resource-saving & environment-friendly excellent enterprises, advanced unit integrating industrialization with IT information by China Petroleum & Chemical Industry, the first manufacturing enterprise with annual turnover of greater than 10 billion RMB in Jiaozuo City.

With the support from many stakeholders, Aeolus is accelerating world-class manufacturing, building a global brand, producing top-grade tyres, and cultivating an outstanding

workforce. Moreover, we are proud to be an innovation and practice base of ChemChina, the demonstration base of World Class Manufacturing/Continuous Improving and a talent cultivating organization. On this basis, we will continue to grow into a respected model corporation of operational excellence and environment stewardship in China and a renowned enterprise throughout the world.

Supporting you and meeting your ongoing needs will drive our march forward. We have confidence to create a brilliant future together and invite you to share our pride in the Aeolus brand.

The chairman of Aeolus Tyre Co, Ltd Wang Feng



Aeolus Tyre Co., Ltd is among the world's top 26 tyre companies and is one of China's leading TBR and OTR tyre manufacturers.

As a China-based manufacturer exporting globally, Aeolus Tyre is the first and only company in the Chinese tyre industry that is exempt from export inspection. It is a customs bonded factory and an AA-rated enterprise by the General Administration of Customs (China Customs' highest rating).

Aeolus Tyre is deemed a major national-level high-tech enterprise with 14 certifications, including ISO9001 quality system, TS16949 system, E-MARK, the US DOT, and European Union's ECE -- one of the few Chinese tyre companies to have all of these certifications. The company received the Henan Provincial Governor's Quality Award, the city of Jiaozuo's Major Quality Award, and the company's Chairman, Wang Feng, won the "National Quality Work Advanced Individual" award. Aeolus Tyre has a post-doctoral scientific research program, is a recognized National Enterprise Technical Center and has taken part in setting 16 Chinese tyre industry standards.

Aeolus Tyre is one of the Top 100 Enterprises for Corporate Social Responsibility in China and one of China's 25 "Most Honorable" publicly listed companies. It is one of China's Top 500 "most valuable brands" as evaluated by World Brand Lab for nine consecutive years, with a brand value of 6.416 billion RMB. "Aeolus" is listed as a famous Chinese trademark and its leading product, "Aeolus" TBR tyre, holds a famous Chinese brand title. Aeolus Tyre products are available in over 140 countries and regions around the world.



VOLVO OCEAN RACE

● ● ● ● ● ● ● ● ● ●
ROUND THE WORLD







THE PATTERN CODE NAMING METHOD

A D L 02

The first letter on behalf of the company name.

We choose the first letter "A" from "Aeolus Tyre" on behalf of the company's name.

The second letter represents the installation of the wheel we recommended.

S: Steering wheel
D: Driving wheel
T: Trailer wheel
G: General wheel

L. The third letter represents the uses or road we recommended.

L: long haul
R: regional
C: compound (on/off) road
B: bus tyre
M: mining road
W: winter tyre
P: multipurpose

The double-digit represents pattern style identification code

CONTENES

Naming method of pattern code	07
Contents	08
Green tyres	09
Application of new technology	11
Product positioning map	13
Long haul	15
Regional Pick up & Delivery	23
On&Off road	35
Mining or off road	41
Tyres for winter grip	45
Tyres for intercity coach	49
Tyres for urban bus	53
Aeolus technical data	55
Usage&maintenance of tyres	63



GREEN TYRES

Not all tyres are nontoxic, not all are harmless and green.
Aeolus put green production into practice in China, and brought it to the world.



Aeolus TBR Tyres -The Pioneer of Saving Fuel

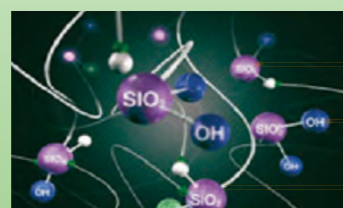
Aeolus TBR Tyres – a new type of green and fuel-saving tyre, using environmental friendly raw materials, innovative products design and advanced technology. The whole process produces less emission, little dust, low noise and consumes less energy. The products are nontoxic, safe, fuel-saving, low noise, anti-slip, can be retreaded, and comply with EU REACH standards. Aeolus Green Tyre has better performance of low rolling resistance, thus decreasing energy consumption, and saving fuel, and lowering exhaust emissions. Aeolus Green Tyre can save 5% fuel consumption on average.

Raw Material-Environmental Protection

- Aeolus complies with the EU regulations and environmental REACH standards.
- Aeolus uses nontoxic and harmless material both in all products and in the production process -- these include promoter NOBS, vulcanizing agent DTDM, and anti-aging agent A, anti-aging agent D, polycyclic aromatic oil.
- Non-fossil fuel materials decrease the oil/coal chemical industry to 98%.
- Completely replace use of aromatic oils with non-toxic liquid paraffin oil.
- Fuel-saving. In order to reduce fuel consumption, the new nano compound and silica reinforcing agent can simultaneously satisfy wet braking and fuel-saving requirements.

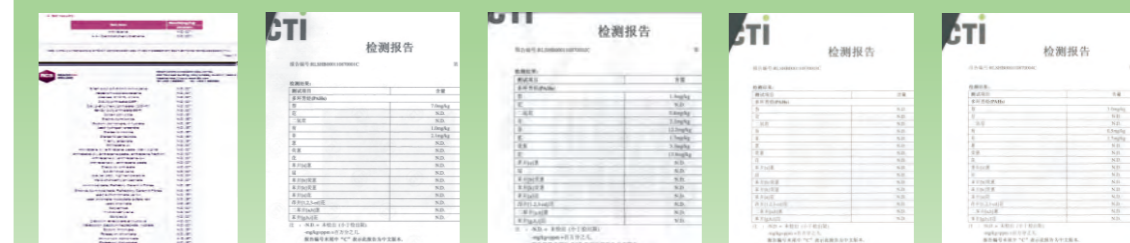


Commonly used silicon rubber



New fuel-saving technology

silicon
oxyhydroxide
anchoring agent



REACH test results of Aeolus green tyres.

The production process – Green & Fuel-savings

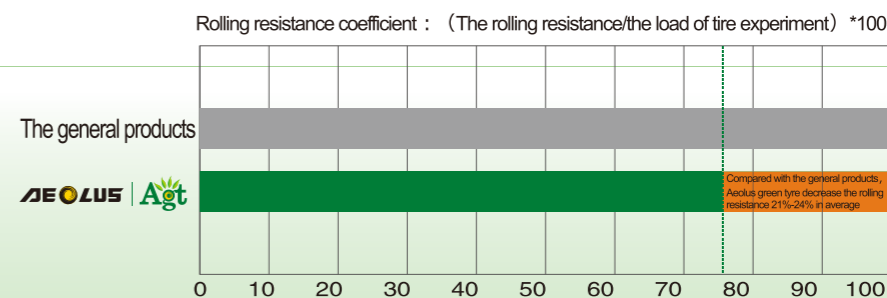
New technology, mixing under low temperature and curing under changeable temperature.
Production process: less smoke, little dust, low noise and low energy consumption.

The product – Green&Fuel-savings

- Green:the products is nontoxic, comply with EU REACH standard.
- Fuel-saving:according to the research, under the same load, the rolling resistance decrease 21%-24% in average, 1% fuel will save because of 3%-5% rolling resistance reduction. So for a vehicle fitting four fuel-saving tires, 5% fuel will save in average.
- Excellent performance:safe, low noise, anti- slipper.
- Recappable: foreign tire professional journals recognized that Aeolus tire is one of three major chinese tire that can be retreaded.

Low rolling resistance

Compared with the general products , Aeolus green tyre decrease the rolling resistance 21%-24% in average, can save 5% fuel in average.



Maximum 24% reduction in rolling resistance

Aeolus provide 100 percent environmentally friendly products!

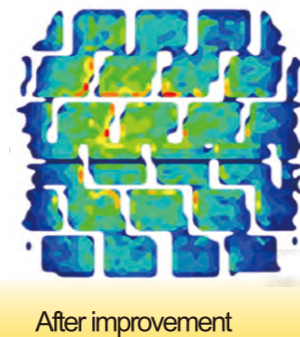
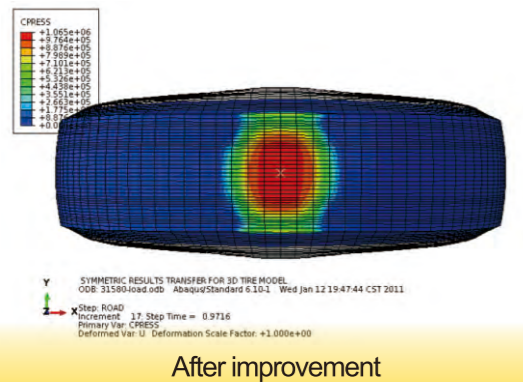
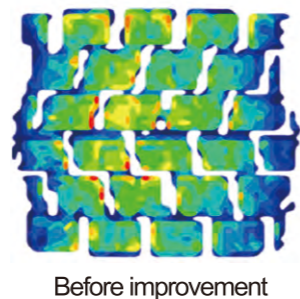
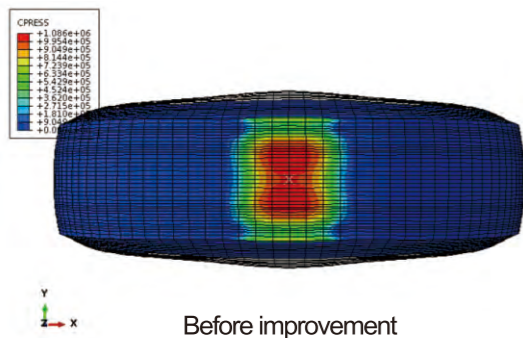




TRUCK & BUS RADIAL TYRE

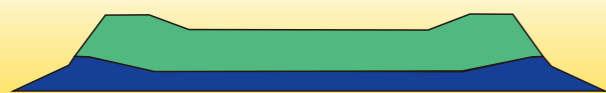
TRUCK & BUS RADIAL TYRE
The application of new technology

1. Optimization of pressure distribution (L&R)



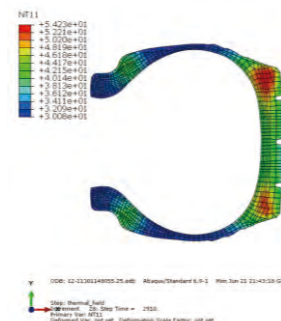
Using the optimum profile and structure design of the tread; ensures uniform footprint pressure, increase the mileage.

2. New design of tyre crown' structure.(M&C)



By increasing the thickness of tread base and improving compound formulation, heat emission performance is improved, prolonging the life of the tyre.

3. The technology of temperature field simulation (M&R&L)



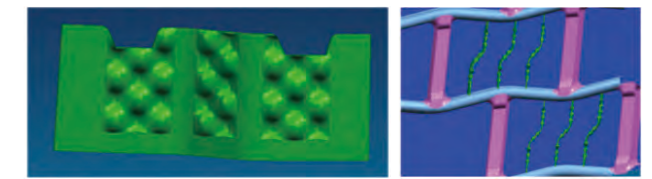
Optimization of the tyre structure reduces the damage of rubber hysteresis, improving fuel-efficiency.

4. Strengthen the bead (M&C)



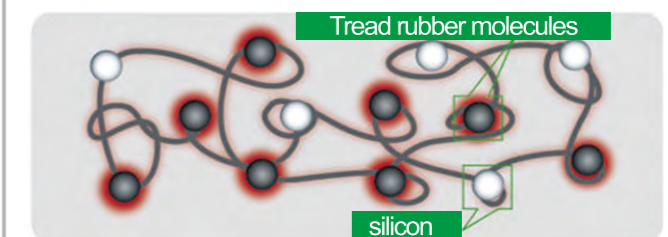
Enhancement of the load capacity with increasing the multilayer high strength fiber cord in bead.

6. Three-dimensional steel sheet



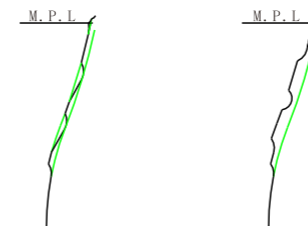
A new design structure of block pattern cutter, this structure has a good balance of the stiffness stability both in longitudinal and transverse.

7. New design of tire formula



New formulaed material to reduce the hysteresis loss

5. Improved sidewall design (M&B)



Before improvement After improved

Thickened and reinforcing sidewall in order to prevent scratches, reduce the tire sidewall's damage .

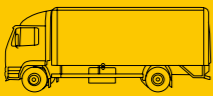
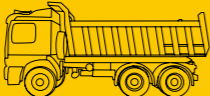
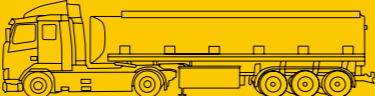

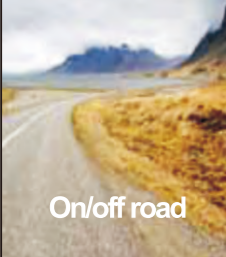



Aeolus bead to bead hot reread tyre

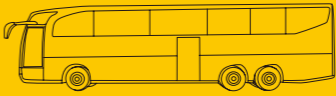
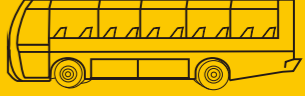




According to the research of <Tyre Man>, 90% of Chinese tyre can NOT be rereaded. Aeolus is the few brand which can be rereaded



PRODUCT POSITIONING MAP

Road/Working condition	Light Truck		Self-dumping Truck		Trailer		
							
	Steering	Driving	Steering	Driving	Steering	Driving	Trailer
 Mining or Off road	HN09	HN09	HN10 HN508 AGM88	HN10 HN508 AGM88			
 On/off road	HN08 AGC51 HN253	HN08 AGC51 HN09 HN253	HN08 AGC51 HN253	HN596 ADC53 (HN353) HN253 AGM84 HN509 HN352	HN08 AGC51 AGC28 HN253	HN08 AGC51 AGC28 HN253 ADC53 (HN353) HN352	HN08 AGC51 AGC28 HN253
 Regional	HN06 ASR35 (HN235)	HN06 HN366+ ADR35 (HN309)			HN06 HN207 HN230+ HN257 HN266 ASR24 ASR29 ASR69	HN306 HN324 HN266 HN355 HN357 ADR35 (HN309) ADR69	HN06 HN207 HN230+ HN257 HN266 ATR65 ASR24 ASR29 ASR69 ATR33
 Long haul					ASL33 ASL67 (HN267) ASL06 (HN252) HN227 HN277	HN308+ HN377 ADL67 ADL33	ATL30 (HN803) ASL33 ASL67 (HN267) ATL35 HN227 HN277 HN806 HN809 HN808 HN828 ASL06 (HN252)
 Winter grip use					ASW80	ADW80 ADW81 ADW82	

Road/Working condition	Intercity Coach		Bus	
				
	Steering	Driving	Steering	Driving
 Urban road			AGB20 AGB22	AGB20 AGB22 ADB20
 Intercity road	HN230+ HN257 ASL67 (HN267) ASR35 (HN235) AGB21 (HN223)	HN230+ HN257 ASL67 (HN267) ASR35 (HN235) AGB21 (HN223)		

Truck & Bus Radial Tyre

Long haul

Road character
Mainly used on highway
Application
Long distance High speed

LONG HAUL



ASL67 (HN267)



- Recommend to use
- Permitted
- Not recommended to use

Application:

Steer wheel, long distance application;
Suitable for high speed on good road surface;
Good self-cleaning and anti-puncture character;
With good drainage and anti-side-skid character;
With good tear resistance character.



Size	Ply Rating	Standard Rim	Permitted Rim	Section Wid.(mm)	Overall dia.(mm)	Single Max. Load(kg)	DualMax. Load(kg)	Single(kPa)	Dual (kPa)	LI/SS	Second. LI/SS	Tread	
												mm	32nds
7.00R16 LT	12	5.50F	6.00G	198	778	1215	1060	670	670	115/110M		12.5	16
7.00R16 LT	14	5.50F	6.00G	198	778	1320	1180	770	770	118/114M		12.5	16
7.50R16 LT	14	6.00G	5.50F 6.50H	216	803	1500	1320	770	770	122/118M		12.5	16
7.50R20	14	6.00	6.50T 6.5	215	936	1900	1800	830	830	130/128L		12.5	16
8.25R16 LT	14	6.50H	6.00G 6.5	230	850	1700	1500	670	670	126/122M		12.5	16
8.25R16 LT	16	6.50H	6.00G 6.5	230	850	1800	1600	770	770	128/124M		12.5	16
9R22.5	14	6.75	6.00/7.50	230	968	2240	2120	830	830	136/134M		14.5	18
11R22.5	14	8.25	7.50	277	1051	2800	2650	720	720	144/142M		15	19
11R22.5	16	8.25	7.50	277	1051	3000	2725	830	830	146/143M		15	19
11R24.5	14	8.25	7.50	282	1092	3000	2725	720	720	146/143M		15	19
11R24.5	16	8.25	7.50	282	1092	3250	3000	830	830	149/146M		15	19
275/80R22.5	16	8.25	7.50	285	1015	3075	2800	830	830	149/146L	148/145M	15	19
285/75R24.5	14	8.25	----	280	1050	2800	2575	760	760	144/141M		15	19
295/75R22.5	14	9.00	8.25	292	1015	2800	2575	760	760	144/141M		15	19

ASL33



- Recommend to use
- Permitted
- Not recommended to use

Application:

Steer wheel, long distance application;
Suitable for high speed on good road surface;
With good drainage and anti-side-skid character;
Low noise and low rolling resistance;
Excellent high speed performance.



Size	Ply Rating	Standard Rim	Permitted Rim	Section Wid.(mm)	Overall dia.(mm)	Single Max. Load(kg)	DualMax. Load(kg)	Single(kPa)	Dual (kPa)	LI/SS	Second. LI/SS	Tread	
												mm	32nds
12R22.5	16	9.00	8.25	300	1076	3350	3075	830	830	150/147M		15.5	20
12R22.5	18	9.00	8.25	300	1076	3550	3250	930	930	152/149M		15.5	20
295/60R22.5	18	9.00	9.75	288	915	3250	3000	900	900	149/146L	150/147 K	13.5	17
295/80R22.5	18	9.00	8.25	298	1038	3550	3250	900	900	152/149M		13.5	17
315/70R22.5	18	9.00	9.75	312	1010	3450	3150	830	830	152/148M	154/150 L	14.5	18
315/80R22.5	18	9.00	9.75	315	1074	3750	3450	830	830	154/150M	156/150 L	14	18
315/80R22.5	20	9.00	9.75	315	1074	4125	3750	900	900	157/154M		14	18

LONG HAUL

HN308+



- Recommend to use
- Permitted
- Not recommended to use

Application:

Drive wheel, long distance application.
With excellent anti-uneven wear and good wear resistance character;
With good drainage and anti-side-skid character;



Size	Ply Rating	Standard Rim	Permitted Rim	Section Wid.(mm)	Overall dia.(mm)	Single Max. Load(kg)	DualMax. Load(kg)	Single(kPa)	Dual (kPa)	LI/SS	Second. LI/SS	Tread	
												mm	32nds
11R22.5	14	8.25	7.50	277	1062	2800	2650	720	720	144/142L		20.6	26
11R22.5	16	8.25	7.50	280	1066	3000	2725	830	830	146/143L		20.6	26
11R24.5	14	8.25	7.50	289	1106	3000	2725	720	720	146/143L		20.6	26
11R24.5	16	8.25	7.50	282	1104	3250	3000	830	830	149/146L		20.6	26
275/80R22.5	16	8.25	7.50	285	1026	3075	2800	830	830	149/146L	148/145M	20.6	26
285/75R24.5	14	8.25	---	284	1064	2800	2575	760	760	144/141M		20.6	26
295/75R22.5	14	9.00	8.25	297	1027	2800	2575	760	760	144/141M		20.6	26

ADL67



- Recommend to use
- Permitted
- Not recommended to use

Application:

Drive wheel, long distance use;
Suitable for good road surface;
M+S pattern and great anti-wearing character;
With great grip ability and excellent traction character;



Size	Ply Rating	Standard Rim	Permitted Rim	Section Wid.(mm)	Overall dia.(mm)	Single Max. Load(kg)	DualMax. Load(kg)	Single(kPa)	Dual (kPa)	LI/SS	Second. LI/SS	Tread	
												mm	32nds
12R22.5	16	9.00	8.25	300	1075	3350	3075	830	830	150/147M		18	23
12R22.5	18	9.00	8.25	300	1075	3550	3250	930	930	152/149M		18	23
295/60R22.5	18	9.00	9.75	288	926	3250	3000	900	900	149/146L	150/147 K	18	23
295/80R22.5	18	9.00	8.25	298	1050	3550	3250	900	900	152/149M		18	23
305/75R24.5	16	9.00	8.25	306	1087	3350	3075	760	760	152/148M		18	23
305/75R24.5	18	9.00	8.25	298	1085	3650	3350	830	830	154/150M		18	23
315/60R22.5	20	9.75	9.00	315	952	3550	3150	900	900	152/148L		18	23
315/70R22.5	18	9.00	9.75	317	1020	3450	3150	830	830	152/148M	154/150 L	18	23
315/80R22.5	18	9.00	9.75	319	1086	3750	3450	830	830	154/150M	156/150 L	18	23

HN377



- Recommend to use
- Permitted
- Not recommended to use

Application:

Drive wheel, long distance use;
Suitable for high speed on good road surface;
With good wear resistance and anti-side-skid character;
Low heat generating, excellent anti-wear character.



Size	Ply Rating	Standard Rim	Permitted Rim	Section Wid.(mm)	Overall dia.(mm)	Single Max. Load(kg)	DualMax. Load(kg)	Single(kPa)	Dual (kPa)	LI/SS	Second. LI/SS	Tread	
												mm	32nds
11R22.5	14	8.25	7.50	277	1068	2800	2650	720	720	144/142L		23	29
11R22.5	16	8.25	7.50	277	1068	3000	2725	830	830	146/143L	148/145 K	23	29
11R24.5	14	8.25	7.50	282	1110	3000	2725	720	720	146/143L		23	29
11R24.5	16	8.25	7.50	282	1110	3250	3000	830	830	149/146L		23	29
275/80R22.5	16	8.25	7.50	285	1032	3075	2800	830	830	149/146L	148/145 M	23	29
285/75R24.5	14	8.25	---	284	1068	2800	2575	760	760	144/141L		23	29
295/75R22.5	14	9.00	8.25	296	1033	2800	2575	760	760	144/141L		23	29

ADL33



- Recommend to use
- Permitted
- Not recommended to use

Application:

Drive wheel, long distance use;
Suitable for good road surface;
With good drainage and anti-side-skid character;
M+S pattern and low rolling resistance;
With excellent traction and anti-wear character.



Size	Ply Rating	Standard Rim	Permitted Rim	Section Wid.(mm)	Overall dia.(mm)	Single Max. Load(kg)	DualMax. Load(kg)	Single(kPa)	Dual (kPa)	LI/SS	Second. LI/SS	Tread	
												mm	32nds
12R22.5	16	9.00	8.25	300	1075	3350	3075	830	830	150/147M		18	23
12R22.5	18	9.00	8.25	300	1075	3550	3250	930	930	152/149M		18	23
295/60R22.5	18	9.00	9.75	288	926	3250	3000	900	900	149/146L	150/147 K	18	23
295/80R22.5	18	9.00	8.25	288	1050	3550	3250	900	900	152/149M		18	23
315/70R22.5	18	9.00	9.75	316	1023	3450	3150	830	830	152/148M	154/150 L	18	23
315/80R22.5	18	9.00	9.75	318	1088	3750	3450	830	830	154/150M	154/150 L	18	23

LONG HAUL

ATL30 (HN803)



- Recommend to use
- Permitted
- Not recommended to use



Application:

Trailer wheel, long distance use;
Suitable for high speed on good road surface;
With good drainage and anti-side-skid character;
Low heat generating and low rolling resistance.



Size	Ply Rating	Standard Rim	Permitted Rim	Section Wid.(mm)	Overall dia.(mm)	Single Max. Load(kg)	DualMax. Load(kg)	Single(kPa)	Dual (kPa)	LI/SS	Second. LI/SS	Tread	
												mm	32nds
12R22.5	16	9.00	8.25	300	1072	3350	3075	830	830	150/147M		16.5	21
12R22.5	18	9.00	8.25	300	1072	3550	3250	930	930	152/149M		16.5	21
11.00R20	18	8.0	8.00V/8.5	288	1086	3550	3250	930	930	152/149L		16.5	21

ATL35



- Recommend to use
- Permitted
- Not recommended to use



Application:

Trailer wheel, long distance use;
Suitable for high speed on good road surface;
Low heat generating and low rolling resistance;
With good drainage and anti-side-skid character.



Size	Ply Rating	Standard Rim	Permitted Rim	Section Wid.(mm)	Overall dia.(mm)	Single Max. Load(kg)	DualMax. Load(kg)	Single(kPa)	Dual (kPa)	LI/SS	Second. LI/SS	Tread	
												mm	32nds
215/75R17.5	16	6.00	5.25/6.75	216	765	1750	1600	830	830	127/124M		12	15
215/75R17.5	18	6.00	5.25/6.75	216	765	2180	2060	830	830	135/133J		12	15
235/75R17.5	16	6.75	7.50	238	794	2000	1850	830	830	132/129M		13	16
235/75R17.5	18	6.75	7.50	238	794	2725	2575	830	830	143/141J	144/144 F	13	16



Truck & Bus Radial Tyre Long haul

HN808



- Recommend to use
- Permitted
- Not recommended to use



Application:

Trailer wheel;
Suitable for high speed on good road surface;
With good drainage and anti-side-skid character;
Low noise and low rolling resistance;
With good drainage and anti-side-skid character.



Size	Ply Rating	Standard Rim	Permitted Rim	Section Wid.(mm)	Overall dia.(mm)	Single Max. Load(kg)	DualMax. Load(kg)	Single(kPa)	Dual (kPa)	LI/SS	Second. LI/SS	Tread	
												mm	32nds
11R22.5	14	8.25	7.50	277	1052	2800	2650	720	720	144/142M		10.5	13
11R24.5	14	8.25	7.50	282	1100	3000	2725	720	720	146/143M		10.5	13
285/75R24.5	14	8.25	---	280	1042	2800	2575	760	760	144/141M		11	14
295/75R22.5	14	9.00	8.25	292	1009	2800	2575	760	760	144/141M		11	14

HN828+



- Recommend to use
- Permitted
- Not recommended to use



Application:

Trailer wheel, long distance use;
Suitable for high speed on good road surface;
With good drainage and anti-side-skid character;
Low heat generating and anti-uneven-wear character.



Size	Ply Rating	Standard Rim	Permitted Rim	Section Wid.(mm)	Overall dia.(mm)	Single Max. Load(kg)	DualMax. Load(kg)	Single(kPa)	Dual (kPa)	LI/SS	Second. LI/SS	Tread	
												mm	32nds
225/70R19.5	14	6.75	6.00	226	808	1800	1700	760	760	128/126M		13	16
245/70R19.5	16	7.50	6.75	253	839	2240	2120	830	830	136/134M		13.5	17
245/70R19.5	18	7.50	6.75	252	839	2575	2500	830	830	141/140J		13.5	17

LONG HAUL

HN227



- Recommend to use
- Permitted
- Not recommended to use

Application:

Steer wheel, long distance application;
Suitable for high speed on good road surface;
With good anti-side-skid, handling stability and low rolling resistance characteristics;
Low heat generating and excellent high speed performance character.



Size	Ply Rating	Standard Rim	Permitted Rim	Section Wid.(mm)	Overall dia.(mm)	Single Max. Load(kg)	DualMax. Load(kg)	Single(kPa)	Dual (kPa)	LI/SS	Second. LI/SS	Tread	
												mm	32nds
315/60R22.5	20	9.75	9.00	315	943	3550	3150	900	900	152/148L		13	16

HN806



- Recommend to use
- Permitted
- Not recommended to use

Application:

Trailer wheel, long distance use;
Suitable for highway on good condition;
With excellent anti-side-skid character and drainage character;
Low heat generating and low rolling resistance character.



Size	Ply Rating	Standard Rim	Permitted Rim	Section Wid.(mm)	Overall dia.(mm)	Single Max. Load(kg)	DualMax. Load(kg)	Single(kPa)	Dual (kPa)	LI/SS	Second. LI/SS	Tread	
												mm	32nds
245/70R17.5	18	7.50	6.75	250	781	2725	2575	900	900	143/141J	146/146 F	11	14
265/70R19.5	18	7.50	8.25	258	866	2725	2575	830	830	143/141J		13	16
285/70R19.5	16	8.25	----	276	890	2650	2430	830	830	144/142M	145/143 L	14	18
285/70R19.5	18	8.25	----	276	890	3350	3075	830	830	150/147J		14	18

HN277



- Recommend to use
- Permitted
- Not recommended to use

Application:

Steer wheel, long distance application;
Suitable for high speed on good road surface;
With good drainage and anti-side-skid character;
Low heat generating, excellent high speed driving character;
Low rolling resistance and great anti-wearing character.



Size	Ply Rating	Standard Rim	Permitted Rim	Section Wid.(mm)	Overall dia.(mm)	Single Max. Load(kg)	DualMax. Load(kg)	Single(kPa)	Dual (kPa)	LI/SS	Second. LI/SS	Tread	
												mm	32nds
11R22.5	16	8.25	7.50	277	1051	3000	2725	830	830	146/143L	148/145 K	15	19
11R22.5	14	8.25	7.50	277	1051	2800	2650	720	720	144/142L		15	19
11R24.5	16	8.25	7.50	285	1096	3250	3000	830	830	149/146L		15	19
11R24.5	14	8.25	7.50	285	1096	3000	2725	720	720	146/143L		15	19
275/80R22.5	16	8.25	7.50	285	1015	3075	2800	830	830	149/146L	148/145 M	15	19
285/75R24.5	14	8.25	----	280	1050	2800	2575	760	760	144/141L		15	19
295/75R22.5	14	9.00	8.25	292	1017	2800	2575	760	760	144/141L		15	19

HN809



- Recommend to use
- Permitted
- Not recommended to use

Application:

Trailer wheel, long distance use;
Special designed pattern for supper single trailer tyres;
With excellent anti-side-skid character and drainage character;
Low rolling resistance and low noise character.



Size	Ply Rating	Standard Rim	Permitted Rim	Section Wid.(mm)	Overall dia.(mm)	Single Max. Load(kg)	DualMax. Load(kg)	Single(kPa)	Dual (kPa)	LI/SS	Second. LI/SS	Tread	
												mm	32nds
385/55R19.5	18	12.25	11.75	388	924	4000	----	900	----	156 J		15	19
385/55R22.5	20	12.25	11.75	384	1000	4250	----	830	----	158L	160 J	15	19
385/65R22.5	18	11.75	12.25	384	1069	4250	----	830	----	158L	160 K	15	19
385/65R22.5	20	11.75	12.25	385	1064	4500	----	900	----	160K	158 L	15	19



Truck & Bus Radial Tyre

Regional Pick up & Delivery

Road character

Mainly used on regional pick up & delivery

Application

Medium distance and speed
Relatively more start and brake



REGIONAL PICK UP & DELIVERY



ASR35 (HN235)



- Recommend to use
- Permitted
- Not recommended to use

Application:

Steer wheel for regional use;
Suitable for driving on normal and good condition;
Low noise and excellent high speed driving character;
With excellent anti-side-skid and drainage character.



Size	Ply Rating	Standard Rim	Permitted Rim	Section Wid.(mm)	Overall dia.(mm)	Single Max. Load(kg)	DualMax. Load(kg)	Single(kPa)	Dual (kPa)	LI/SS	Second. LI/SS	Tread	
												mm	32nds
6.50R16 LT	12	5.50F	----	189.7	753	1060	925	670	670	110/105L		12	15
7.00R15	12	5.50F	----	204	752	1150	1030	670	670	110/109M		12.5	16
7.00R16 LT	14	5.50F	6.00G	198	778	1320	1180	770	770	118/114L		12.5	16
7.50R15	14	6.00G	----	213	785	1500	1320	770	770	122/118M		12.5	16
7.50R16	14	6.00G	5.50F6.50H	198	782	1500	1320	770	770	122/118L		12.5	16
8.25R16	16	6.50H	6.00G 6.5	230	846	1700	1500	670	670	126/122M		14	18
205/75R17.5	14	6.00	5.25 6.75	208	754	1600	1500	760	760	124/122M		13	16
215/75R17.5	16	6.00	5.25 6.75	216	765	1750	1600	830	830	127/124M		13	16
215/75R17.5	18	6.00	5.25 6.75	216	765	2180	2060	830	830	135/133J		13	16
225/75R17.5	16	6.75	7.50	224	779	1850	1750	830	830	129/127M		13	16
235/75R17.5	16	6.75	7.50	235	793	2000	1850	830	830	132/129M		13	16
235/75R17.5	18	6.75	7.50	238	794	2725	2575	830	830	143/141J		13	16
245/70R17.5	18	7.50	6.75	251	787	2240	2120	900	900	136/134M		13	16

HN207



- Recommend to use
- Permitted
- Not recommended to use

Application:

Steer wheel, regional use;
Suitable for high and medium speed on good road condition;
With excellent anti-side-skid character and drainage character.
Low noise and low rolling resistance.



Size	Ply Rating	Standard Rim	Permitted Rim	Section Wid.(mm)	Overall dia.(mm)	Single Max. Load(kg)	DualMax. Load(kg)	Single(kPa)	Dual (kPa)	LI/SS	Second. LI/SS	Tread	
												mm	32nds
385/65R22.5	18	11.75	12.25	385	1068	4250	----	830	----	158L	160 K	16	20
385/65R22.5	20	11.75	12.25	385	1068	4500	----	900	----	160J		16	20
425/65R22.5	20	13.00	12.25	421	1119	5000	----	830	----	165K		16.5	21
445/65R22.5	20	14.00	13.00	450	1148	5600	----	830	----	169K		16.5	21

REGIONAL PICK UP & DELIVERY

ATR33



- Recommend to use
- Permitted
- Not recommended to use

Application:

Trailer wheel for regional use
A special tread compound and offering low resistance for good fuel saving combined with improved mileage performance, good braking in wet conditions and low noise emissions.



Size	Ply Rating	Standard Rim	Permitted Rim	Section Wid.(mm)	Overall dia.(mm)	Single Max. Load(kg)	DualMax. Load(kg)	Single(kPa)	Dual (kPa)	LI/SS	Second. LI/SS	Tread	
												mm	32nds
385/65R22.5	18	11.75	12.25	383	1086	4250	----	830	----	158L	160K	16.8	21

HN230+



- Recommend to use
- Permitted
- Not recommended to use

Application:

Steer and trailer wheel, regional use;
Suitable for good road condition;
With excellent anti-side-skid character, low noise;
Low rolling resistance and good high-speed character.



Size	Ply Rating	Standard Rim	Permitted Rim	Section Wid.(mm)	Overall dia.(mm)	Single Max. Load(kg)	DualMax. Load(kg)	Single(kPa)	Dual (kPa)	LI/SS	Second. LI/SS	Tread	
												mm	32nds
8.25R15 TR	18	6.5	6.0 7.0	236	836	2725	2575	850	850	143/141G	141/140 J	13	16
8.25R15 TR	18	6.5	6.0 7.0	236	836	2300	2240	860	860	137/136K		13	16
10.00R15 TR	18	7.5	7.0 8.0	283	924	3150	2900	850	850	148/145G	146/144 J	13.5	17
10.00R15 TR	18	7.5	7.0 8.0	283	924	3150	2900	860	860	148/145K		13.5	17
255/70R22.5	16	7.50	8.25	254	929	2500	2300	830	830	140/137M	140/140 L	14.5	18
275/70R22.5	18	8.25	9.00	272	964	3150	2900	900	900	148/145M		15	19

HN257



- Recommend to use
- Permitted
- Not recommended to use

Application:

Steer and trailer wheel for regional use or long distance use;
With excellent anti-side-skid character;
Low heat generating, excellent high speed driving character;
Low noise and low rolling resistance.



Size	Ply Rating	Standard Rim	Permitted Rim	Section Wid.(mm)	Overall dia.(mm)	Single Max. Load(kg)	DualMax. Load(kg)	Single(kPa)	Dual (kPa)	LI/SS	Second. LI/SS	Tread	
												mm	32nds
10R22.5	14	7.50	6.75	248	1020	2575	2430	790	790	141/139M		14.5	18
10R22.5	16	7.50	6.75	248	1020	2800	2650	900	900	144/142M		14.5	18
11R22.5	14	8.25	7.50	277	1053	2800	2650	720	720	144/142M		15	19
11R22.5	16	8.25	7.50	277	1053	3000	2725	830	830	146/143M	148/145 L	15	19
11R24.5	14	8.25	7.50	288	1096	3000	2725	720	720	146/143M		15	19
11R24.5	16	8.25	7.50	290	1096	3250	3000	830	830	149/146M		15	19
12R22.5	16	9.00	8.25	301	1076	3350	3075	830	830	150/147M		16.5	21
12R22.5	18	9.00	8.25	302	1077	3550	3250	930	930	152/149M		16.5	21
255/70R22.5	16	7.50	8.25	250	926	2500	2300	830	830	140/137M	140/140 L	14.5	18
265/70R19.5	16	7.50	8.25	258	869	2500	2360	830	830	140/138M		13	16
275/70R22.5	18	8.25	9.00	272	963	3150	2900	900	900	148/145M		15	19
285/70R19.5	16	8.25	-----	278	890	2650	2430	830	830	144/142M	145/143 L	14	18
295/60R22.5	18	9.00	9.75	288	917	3250	3000	900	900	149/146L	150/147 K	14.5	18
295/80R22.5	18	9.00	8.25	298	1046	3550	3250	900	900	152/149M		15.5	20
315/70R22.5	18	9.00	9.75	311	1016	3450	3150	830	830	152/148M	154/150 L	16.5	21
315/80R22.5	18	9.00	9.75	315	1082	3750	3450	830	830	154/150M	156/150 L	16.5	21
315/80R22.5	20	9.00	9.75	315	1083	4625	3750	900	900	161/154K	164/162 B	16.5	21

ATR65



- Recommend to use
- Permitted
- Not recommended to use

Application:

Trailer wheel for regional use;
With excellent anti-side-skid character;
Low rolling resistance character, low noise;
With excellent anti-side-skid and low heat generating character.



Size	Ply Rating	Standard Rim	Permitted Rim	Section Wid.(mm)	Overall dia.(mm)	Single Max. Load(kg)	DualMax. Load(kg)	Single(kPa)	Dual (kPa)	LI/SS	Second. LI/SS	Tread	
												mm	32nds
9.5R17.5	14	6.75	6.00	228	840	1850	1750	760	760	129/127M		13	16
9.5R17.5	18	6.75	6.00	228	840	2825	2575	900	900	143/141J		13	16
245/70R17.5	18	7.50	6.75	252	780	2725	2575	900	900	143/141J	146/146F	11	14
265/70R19.5	16	7.50	8.25	258	866	2500	2360	830	830	140/138M		13	16
265/70R19.5	18	7.50	8.25	258	866	2725	2575	830	830	143/141J		13	16
285/70R19.5	16	8.25	-----	276	890	2650	2430	830	830	144/142M	145/143L	14	18
285/70R19.5	18	8.25	-----	276	890	3350	3075	830	830	150/147J		14	18
385/55R19.5	18	12.25	11.75	386	924	4000	-----	900	-----	156 J		15	19
385/55R22.5	20	12.25	11.75	385	1004	4250	-----	830	-----	158L	160 J	16.5	21
385/65R22.5	18	11.75	12.25	385	1070	4250	-----	830	-----	158L	160 K	16.8	21
385/65R22.5	20	11.75	12.25	385	1070	4500	-----	900	-----	160J		16.8	21
425/65R22.5	20	13.00	12.25	422	1118	5000	-----	830	-----	165K		16.5	21
445/65R22.5	20	14.00	13.00	450	1148	5600	-----	830	-----	169K		16.5	21

REGIONAL PICK UP & DELIVERY

ASR69



- Recommend to use
- Permitted
- Not recommended to use

Application:

Steer wheel for regional use;
Low rolling resistance and low noise character;
Low heat generating;
Good high-speed driving character.



Size	Ply Rating	Standard Rim	Permitted Rim	Section Wid.(mm)	Overall dia.(mm)	Single Max. Load(kg)	DualMax. Load(kg)	Single(kPa)	Dual (kPa)	LI/SS	Second. LI/SS	Tread	
												mm	32nds
12R22.5	16	9.00	8.25	300	1076	3350	3075	830	830	150/147M		16.5	21
12R22.5	18	9.00	8.25	300	1076	3550	3250	930	930	152/149M		16.5	21
295/80R22.5	18	9.00	8.25	305	1048	3550	3250	900	900	152/149M		15.5	20
315/70R22.5	18	9.00	9.75	312	1018	3450	3150	830	830	152/148M	154/150 L	16.5	21
315/80R22.5	18	9.00	9.75	315	1080	3750	3450	830	830	154/150M	156/150 L	16.5	21
315/80R22.5	20	9.00	9.75	315	1080	4125	3750	900	900	157/154M		16.5	21



HN306



- Recommend to use
- Permitted
- Not recommended to use

Application:

Drive wheel for regional use;
With excellent grip ability and traction character;
Long mileage, anti-wearing character and great high speed driving character.



Size	Ply Rating	Standard Rim	Permitted Rim	Section Wid.(mm)	Overall dia.(mm)	Single Max. Load(kg)	DualMax. Load(kg)	Single(kPa)	Dual (kPa)	LI/SS	Second. LI/SS	Tread	
												mm	32nds
9.00R20	16	7.0	7.00T 7.5	255	1025	2800	2650	900	900	144/142K		17	21
9.00R20	18	7.0	7.00T/7.5	259	1028	3150	2800	930	930	148/144J		17	21
10.00R20	16	7.5	7.50V 8.0	274	1055	3000	2725	830	830	146/143K		17.5	22
10.00R20	18	7.5	7.50V 8.0	274	1055	3250	3000	930	930	149/146K		17.5	22
11.00R20	16	8.0	8.00V 8.5	288	1090	3350	3075	830	830	150/147K		18.5	23
11.00R20	18	8.0	8.00V 8.5	288	1090	3550	3250	930	930	152/149K		18.5	23
11R22.5	14	8.25	7.50	277	1062	2800	2650	720	720	144/142M		20.6	26
11R22.5	16	8.25	7.50	277	1062	3000	2725	830	830	148/144M		20.6	26
11R24.5	14	8.25	7.50	282	1104	3000	2725	720	720	146/143L		20.6	26
11R24.5	16	8.25	7.50	282	1104	3250	3000	830	830	148/144L		20.6	26
12.00R20	18	8.5	8.50V 9.0	310	1125	3750	3450	830	830	154/151K		19	24
12.00R20	22	8.5	8.50V/9.0	313	1127	4250	3875	970	970	158/159J		19	24
12R22.5	16	9.00	8.25	300	1084	3350	3075	830	830	150/147M		20.6	26
12R22.5	18	9.00	8.25	300	1084	3550	3250	930	930	152/149M		20.6	26
275/80R22.5	16	8.25	7.50	285	1026	3075	2800	830	830	149/146L	148/145 M	20.6	26
285/75R24.5	14	8.25	----	280	1060	2800	2575	760	760	144/141M		20.6	26
295/75R22.5	14	9.00	8.25	292	1026	2800	2575	760	760	144/141M		20.6	26

HN355



- Recommend to use
- Permitted
- Not recommended to use

Application:

Drive wheel for regional use or long distance use;
Suitable for good road surface;
M+S pattern, with powerful grip ability, excellent traction character;
Long mileage and anti-wearing character.



Size	Ply Rating	Standard Rim	Permitted Rim	Section Wid.(mm)	Overall dia.(mm)	Single Max. Load(kg)	DualMax. Load(kg)	Single(kPa)	Dual (kPa)	LI/SS	Second. LI/SS	Tread	
												mm	32nds
10.00R20	16	7.5	7.50V 8.0	274	1060	3000	2725	830	830	146/143L		20	25
10.00R20	18	7.5	7.50V 8.0	274	1060	3250	3000	930	930	149/146L		20	25
10R22.5	14	7.50	6.75	258	1025	2575	2430	790	790	141/139M		15.5	20
10R22.5	16	7.50	6.75	258	1025	2800	2650	900	900	144/142M		15.5	20
11.00R20	16	8.0	8.00V 8.5	288	1095	3350	3075	830	830	150/147L		21	26
11.00R20	18	8.0	8.00V 8.5	288	1095	3550	3250	930	930	152/149M		21	26
11R22.5	16	8.25	7.50	277	1066	3000	2725	830	830	146/143M	148/145 L	22.5	28
11R24.5	16	8.25	7.50	282	1108	3250	3000	830	830	149/146M		22.5	28
12.00R20	18	8.5	8.50V 9.0	310	1132	3750	3450	830	830	154/151L		22	28
12R22.5	16	9.00	8.25	300	1090	3350	3075	830	830	150/147M		23	29
12R22.5	18	9.00	8.25	300	1090	3550	3250	930	930	152/149M		23	29
255/70R22.5	16	7.50	8.25	254	936	2500	2300	830	830	140/137M	140/140 L	20	25
265/70R19.5	16	7.50	8.25	258	872	2500	2360	830	830	140/138M		16.5	21
275/70R22.5	18	8.25	9.00	272	972	3150	2900	900	900	148/145M		20	25
275/80R22.5	16	8.25	7.50	285	1026	3075	2800	830	830	149/146L	148/145 M	22.5	28
295/60R22.5	18	9.00	9.75	288	934	3250	3000	900	900	149/146L	150/147 K	22.5	28
295/75R22.5	14	9.00	8.25	298	1030	2800	2575	760	760	144/141M		22.5	28
295/80R22.5	18	9.00	8.25	298	1030	3550	3250	900	900	152/149M		23	29
315/70R22.5	18	9.00	9.75	313	1031	3450	3150	830	830	152/148M	154/150 L	22.5	28
315/80R22.5	18	9.00	9.75	315	1094	3750	3450	830	830	154/150M	156/150 L	23	29
315/80R22.5	20	9.00	9.75	315	1094	4125	3750	900	900	157/154M		23	29

REGIONAL PICK UP & DELIVERY

HN324



- Recommend to use
- Permitted
- Not recommended to use

Application:

Drive wheel, regional use;
M+S pattern with good traction character;
Long mileage, good anti-wearing and anti-uneven wear character



Size	Ply Rating	Standard Rim	Permitted Rim	Section Wid.(mm)	Overall dia.(mm)	Single Max. Load(kg)	DualMax. Load(kg)	Single(kPa)	Dual (kPa)	LI/SS	Second. LI/SS	Tread	
												mm	32nds
11.00R20	16	8.0	8.00V 8.5	288	1090	3350	3075	830	830	150/147L		20.6	26
11.00R20	18	8.0	8.00V 8.5	288	1090	3550	3250	930	930	152/149L		20.6	26
12R22.5	16	9.00	8.25	300	1084	3350	3075	830	830	150/147M		20.6	26
12R22.5	18	9.00	8.25	300	1084	3550	3250	930	930	152/149M		20.6	26
12R24.5	18	9.00	8.25	300	1134	3750	3450	930	930	154/151M		20.6	26

ADR69



- Recommend to use
- Permitted
- Not recommended to use

Application:

Drive wheel, regional use;
Suitable for highway on good condition;
With good grip and traction character;
Good anti-wearing character, long mileage.



Size	Ply Rating	Standard Rim	Permitted Rim	Section Wid.(mm)	Overall dia.(mm)	Single Max. Load(kg)	DualMax. Load(kg)	Single(kPa)	Dual (kPa)	LI/SS	Second. LI/SS	Tread	
												mm	32nds
12R22.5	16	9.00	8.25	300	1090	3350	3075	830	830	150/147M		23	29
12R22.5	18	9.00	8.25	300	1090	3550	3250	930	930	152/149M		23	29
295/80R22.5	18	9.00	8.25	298	1062	3550	3250	900	900	152/149M		22.5	28
315/70R22.5	18	9.00	9.75	312	1030	3450	3150	830	830	152/148M	154/150 L	23	29
315/80R22.5	18	9.00	9.75	315	1094	3750	3450	830	830	154/150M	156/150 L	23	29
315/80R22.5	20	9.00	9.75	315	1094	4125	3750	900	900	157/154M		23	29



HN357



- Recommend to use
- Permitted
- Not recommended to use

Application:

Drive wheel, regional use;
M+S pattern, with good traction character, excellent anti-wear character;
Low heat generating, good high speed driving character.



Size	Ply Rating	Standard Rim	Permitted Rim	Section Wid.(mm)	Overall dia.(mm)	Single Max. Load(kg)	DualMax. Load(kg)	Single(kPa)	Dual (kPa)	LI/SS	Second. LI/SS	Tread	
												mm	32nds
11R22.5	16	8.25	7.50	277	1062	3000	2725	830	830	146/143M		20.6	26
11R24.5	16	8.25	7.50	282	1104	3250	3000	830	830	149/146M		20.6	26

ASLO6 (HN252)



- Recommend to use
- Permitted
- Not recommended to use

Application:

Steer wheel for long distance use;
Suitable for good road surface application;
With good drainage and anti-side-skid character;
Long mileage and anti-wearing character.



Size	Ply Rating	Standard Rim	Permitted Rim	Section Wid.(mm)	Overall dia.(mm)	Single Max. Load(kg)	DualMax. Load(kg)	Single(kPa)	Dual (kPa)	LI/SS	Second. LI/SS	Tread	
												mm	32nds
9R22.5	14	6.75	6.00 7.50	228	968	2240	2120	830	830	136/134M		14.5	18
295/60R22.5	18	9.00	9.75	288	916	3250	3000	900	900	149/146L	150/147 K	13	16
295/80R22.5	18	9.00	8.25	298	1040	3550	3250	900	900	152/149M		14	18
315/70R22.5	20	9.00	9.75	312	1010	3750	3350	900	900	154/150M		14	18
315/70R22.5	18	9.00	9.75	312	1010	3450	3150	830	830	152/148M	154/150 L	14	18
315/80R22.5	18	9.00	9.75	315	1074	3750	3450	830	830	154/150M	156/150 L	14	18

REGIONAL PICK UP & DELIVERY

HN06



- Recommend to use
- Permitted
- Not recommended to use

Application:

Steer and trailer wheel, regional use;
Suitable for good road surface application;
With excellent anti-side-skid character, low rolling resistance;
Low heat generating, excellent high speed driving character



Size	Ply Rating	Standard Rim	Permitted Rim	Section Wid.(mm)	Overall dia.(mm)	Single Max. Load(kg)	DualMax. Load(kg)	Single(kPa)	Dual (kPa)	LI/SS	Second. LI/SS	Tread	
												mm	32nds
8.25R20	16	6.5	6.50T 7.0	232	967	2430	2300	930	930	139/137L		13	16
8.25R20	14	6.5	6.50T 7.0	232	963	2240	2120	830	830	136/134L		13	16
9.00R20	14	7.0	7.00T 7.5	255	1020	2575	2430	790	790	141/139L		14	18
9.00R20	16	7.0	7.00T 7.5	255	1020	2800	2650	900	900	144/142L		14	18
10.00R20	16	7.5	7.50V 8.0	274	1049	3000	2725	830	830	146/143L		15	19
10.00R20	18	7.5	7.50V 8.0	274	1049	3250	3000	930	930	149/146L		15	19
11R22.5	14	8.25	7.50	277	1051	2800	2650	720	720	144/142M		15	19
11R22.5	16	8.25	7.50	277	1051	3000	2725	830	830	148/144M		15	19
11R24.5	14	8.25	7.50	287	1092	3000	2725	720	720	146/143M		15	19
11R24.5	16	8.25	7.50	287	1092	3250	3000	830	830	149/146M		15	19
275/80R22.5	16	8.25	7.50	285	1015	3075	2800	830	830	149/146L	148/145 M	15	19
285/75R24.5	14	8.25	----	280	1050	2800	2575	760	760	144/141M		15	19
295/75R22.5	14	9.00	8.25	292	1015	2800	2575	760	760	144/141M		15	19

HN266



- Recommend to use
- Permitted
- Not recommended to use

Application:

Steer and trailer wheel for regional use or long distance use;
Suitable for normal and good road condition;
Good anti-wearing character;
With excellent tear resistance and anti-even wear character.



Size	Ply Rating	Standard Rim	Permitted Rim	Section Wid.(mm)	Overall dia.(mm)	Single Max. Load(kg)	DualMax. Load(kg)	Single(kPa)	Dual (kPa)	LI/SS	Second. LI/SS	Tread	
												mm	32nds
8.25R20	14	6.5	6.50T 7.0	232	965	2240	2120	830	830	136/134K		14	18
10.00R20	18	7.5	7.50V 8.0	274	1051	3250	3000	930	930	149/146K		16	20
10.00R20	16	7.5	7.50V 8.0	274	1051	3000	2725	830	830	146/143K		16	20
11.00R20	18	8.0	8.00V 8.5	288	1086	3550	3250	930	930	152/149K		16.5	21
11.00R20	16	8.0	8.00V 8.5	288	1086	3350	3075	830	830	150/147K		16.5	21
11R22.5	16	8.25	7.50	277	1058	3000	2725	830	830	148/144L		18.5	23
11R24.5	16	8.25	7.50	282	1100	3250	3000	830	830	149/146L		18.5	23
12.00R20	18	8.5	8.50V 9.0	310	1122	3750	3450	830	830	154/151K		17	21
315/80R22.5	18	9.00	9.75	315	1084	3750	3450	830	830	154/150K	156/150 K	18.5	23
315/80R22.5	20	9.00	9.75	315	1084	4625	3750	900	900	161/154K		18.5	23

HN07



- Recommend to use
- Permitted
- Not recommended to use

Application:

Drive wheel for regional use;
Suitable for normal and good road condition;
M+S pattern with great grip ability;
Excellent traction character;
Good high speed and anti-puncture character;



Size	Ply Rating	Standard Rim	Permitted Rim	Section Wid.(mm)	Overall dia.(mm)	Single Max. Load(kg)	DualMax. Load(kg)	Single(kPa)	Dual (kPa)	LI/SS	Second. LI/SS	Tread	
												mm	32nds
10.00R20	16	7.5	7.50V 8.0	274	1053	3000	2725	830	830	146/143L		17	21
10.00R20	18	7.5	7.50V 8.0	274	1053	3250	3000	930	930	149/146L		17	21

HN366



- Recommend to use
- Permitted
- Not recommended to use

Application:

Drive wheel for regional use;
Suitable for highway on good condition;
M+S pattern, excellent traction character;
Low rolling resistance and low noise.



Size	Ply Rating	Standard Rim	Permitted Rim	Section Wid.(mm)	Overall dia.(mm)	Single Max. Load(kg)	DualMax. Load(kg)	Single(kPa)	Dual (kPa)	LI/SS	Second. LI/SS	Tread	
												mm	32nds
225/70R19.5	14	6.75	6.00	227	815	1800	1700	760	760	128/126M		16	20
245/70R19.5	16	7.50	6.75	252	844	2180	2060	830	830	136/134M	136/135 J	17	21
245/70R19.5	18	7.50	6.75	252	844	2575	2500	830	830	141/140J		17	21

REGIONAL PICK UP & DELIVERY

ASR24



- Recommend to use
- Permitted
- Not recommended to use

Application:

Steer wheel for regional or long distance use;
Suitable for good road condition;
With excellent anti-side-skid character and drainage character;
Low rolling resistance character, strong shoulder pattern design and excellent anti-uneven wear character.



Size	Ply Rating	Standard Rim	Permitted Rim	Section Wid.(mm)	Overall dia.(mm)	Single Max. Load(kg)	DualMax. Load(kg)	Single(kPa)	Dual (kPa)	LI/SS	Second. LI/SS	Tread	
												mm	32nds
9.5R17.5	14	6.75	6.00	228	840	1850	1750	760	760	129/127M		13	16
9.5R17.5	18	6.75	6.00	228	840	2240	2120	900	900	136/134M		13	16

ASR29



- Recommend to use
- Permitted
- Not recommended to use

Application:

Steer wheel for regional use;
Suitable for good road condition;
With excellent anti-side-skid character and drainage character;
With excellent anti-uneven wear character.



Size	Ply Rating	Standard Rim	Permitted Rim	Section Wid.(mm)	Overall dia.(mm)	Single Max. Load(kg)	DualMax. Load(kg)	Single(kPa)	Dual (kPa)	LI/SS	Second. LI/SS	Tread	
												mm	32nds
10.00R20	16	7.5	7.50V 8.0	274	1047	3000	2725	830	830	146/143L	154/154D	14	18
10.00R20	18	7.5	7.50V 8.0	274	1047	3550	3250	930	930	149/146L		14	18
11.00R20	16	8.0	8.00V 8.5	288	1082	3350	3075	830	830	150/147L	158/158D	14.5	18
11.00R20	18	8.0	8.00V 8.5	288	1082	3550	3250	930	930	152/149L		14.5	18
11R22.5	14	8.25	7.50	280	1055	2800	2650	720	720	144/142M		16.5	21
11R22.5	16	8.25	7.50	280	1055	3000	2725	830	830	146/143M	148/145L	16.5	21
12.00R20	18	8.5	8.50V 9.0	310	1118	3750	3450	830	830	154/151L		15.5	18
12R22.5	16	9.00	8.25	300	1084	3350	3075	830	830	150/147M		16.5	20.8
12R22.5	18	9.00	8.25	300	1084	3550	3250	930	930	152/149M		16.5	20.8

ADR35 (HN309)



- Recommend to use
- Permitted
- Not recommended to use

Application:

Drive wheel for regional use;
Suitable for highway and good condition;
M+S pattern, with good grip character and traction character;
Good anti-wearing character, long mileage.



Size	Ply Rating	Standard Rim	Permitted Rim	Section Wid.(mm)	Overall dia.(mm)	Single Max. Load(kg)	DualMax. Load(kg)	Single(kPa)	Dual (kPa)	LI/SS	Second. LI/SS	Tread	
												mm	32nds
9.5R17.5	14	6.75	6.00	240	842	1850	1750	760	760	129/127M		16	20
9.5R17.5	18	6.75	6.00	240	842	2240	2120	900	900	136/134M		16	20
205/75R17.5	14	6.00	5.25 6.75	205	758	1550	1450	760	760	124/122M		16	20
215/75R17.5	18	6.00	6.75	215	770	2180	2060	830	830	135/133J		16	20
215/75R17.5	16	6.00	6.75	215	770	1750	1600	830	830	127/124M		16	20
225/75R17.5	16	6.75	7.50	224	784	1850	1750	830	830	129/127M		17	21
235/75R17.5	16	6.75	7.50	236	800	2000	1850	830	830	132/129M		17	21
235/75R17.5	18	6.75	7.50	236	800	2725	2575	900	900	143/141J		17	21
245/70R17.5	18	7.50	6.75	252	792	2120	2000	900	900	136/134M		16.5	21
285/70R19.5	16	8.25	---	276	896	2650	2430	830	830	144/142M	145/143 L	17	21





Truck & Bus Radial Tyre

ON/OFF road

Road character
 Alternate on road and off road
 Application
 Shorter distance, highly carrying capacity,
 harsh using conditions
 Relatively more vehicles start and brake

ON/OFF ROAD



HNO8



- Recommend to use
- Permitted
- Not recommended to use



Application:

Steer and trailer wheel, long distance application
 Suitable for relatively poor road condition;
 Low heat generating and great rear resistance character.



Size	Ply Rating	Standard Rim	Permitted Rim	Section Wid.(mm)	Overall dia.(mm)	Single Max. Load(kg)	DualMax. Load(kg)	Single(kPa)	Dual (kPa)	LI/SS	Second. LI/SS	Tread	
												mm	32nds
7.00R16 LT	12	5.50F	6.00G	198	778	1215	1060	670	670	115/110L		13	16
7.00R16 LT	14	5.50F	6.00G	198	778	1320	1180	770	770	118/114L		13	16
7.50R16 LT	14	6.00G	6.50H	216	803	1500	1320	770	770	122/118L		13	16
7.50R20	14	6.00	6.50T	215	936	1900	1800	830	830	130/128K		13	16
8.25R16 LT	16	6.50H	6.00G	230	850	1800	1600	770	770	128/124L		13	16
8.25R16 LT	14	6.50H	6.00G	230	850	1700	1500	670	670	126/122L		13	16
8.25R20	14	6.5	6.50T	232	965	2240	2120	830	830	136/134K		14.5	18
9.00R20	14	7.0	7.00T	255	1022	2575	2430	790	790	141/139K		15.5	20
9.00R20	16	7.0	7.00T	255	1022	2800	2650	900	900	144/142K		15.5	20
10.00R20	16	7.5	7.50V	274	1052	3000	2725	830	830	146/143K		16.5	21
10.00R20	18	7.5	7.50V	274	1052	3250	3000	930	930	149/146K		16.5	21
10R22.5	16	7.50	6.75	252	1022	2800	2650	900	900	144/142L		15.5	20
10R22.5	14	7.50	6.75	252	1022	2575	2430	790	790	141/139L		15.5	20
11.00R20	16	8.0	8.00V	288	1086	3350	3075	830	830	150/147K		17	21
11.00R20	18	8.0	8.00V	288	1086	3550	3250	930	930	152/149K		17	21
11R22.5	14	8.25	7.50	277	1054	2800	2650	720	720	144/142L		16.5	21
11R22.5	16	8.25	7.50	277	1054	3000	2725	830	830	146/143L	148/145 K	16.5	21
11R24.5	14	8.25	7.50	282	1096	3000	2725	720	720	146/143L		16.5	21
11R24.5	16	8.25	7.50	282	1096	3250	3000	830	830	149/146L		16.5	21
12.00R20	20	8.5	8.50V	310	1122	4000	3650	900	900	156/153K		17.5	22
12.00R20	18	8.5	8.50V	310	1122	3750	3450	830	830	154/151K		17.5	22
12.00R24	18	8.5	8.50V	314	1222	4250	3875	830	830	158/155K		17.5	22
12.00R24	20	8.5	8.50V	314	1222	4500	4125	900	900	160/157K		17.5	22
12R22.5	16	9.00	8.25	300	1076	3350	3075	830	830	150/147L		17	21
12R22.5	18	9.00	8.25	300	1076	3550	3250	930	930	152/149L		17	21
12R24.5	18	9.00	8.25	300	1126	3750	3450	930	930	154/151L		17	21
315/80R22.5	18	9.00	9.75	315	1080	3750	3450	830	830	154/150L	156/150 K	16.5	21
315/80R22.5	20	9.00	9.75	315	1080	4625	3750	900	900	161/154K		16.5	21

ON/OFF ROAD

HN253



- Recommend to use
- Permitted
- Not recommended to use

Application:

Steer and trailer wheel, on/off use;
Suitable for mixed road on surface and relatively poor road surface;
Good anti-crack and tear resistance character;
Low heat generating and great loading capacity.
Excellent high-speed driving character.



Size	Ply Rating	Standard Rim	Permitted Rim	Section Wid.(mm)	Overall dia.(mm)	Single Max. Load(kg)	DualMax. Load(kg)	Single(kPa)	Dual (kPa)	LI/SS	Second. LI/SS	Tread	
												mm	32nds
8.25R16 LT	14	6.50H	6.00G 6.5	230	856	1700	1500	670	670	126/122L		16	20
8.25R16 LT	16	6.50H	6.00G 6.5	230	856	1800	1600	770	770	128/124L		16	20
9.00R20	16	7.0	7.00T 7.5	255	1022	2800	2650	900	900	144/142K		15.5	20
10.00R20	16	7.5	7.50V 8.0	274	1053	3000	2725	830	830	146/143K		16.5	21
11.00R20	16	8.0	8.00V 8.5	288	1086	3350	3075	830	830	150/147K		17	21
11.00R20	18	8.0	8.00V 8.5	288	1086	3550	3250	930	930	152/149K		17	21
12.00R20	18	8.5	8.50V 9.0	310	1122	3750	3450	830	830	154/151K		17	21
13R22.5	18	9.75	9.00	316	1128	3750	3450	830	830	154/151L	156/150 K	18	23

HN09



- Recommend to use
- Permitted
- Not recommended to use

Application:

Drive wheel;
Suitable for mix road and relatively poor road condition;
Excellent traction character and passing though character;
Good anti-crack and anti-puncture character.
M+S pattern, great traction and driving performance.



Size	Ply Rating	Standard Rim	Permitted Rim	Section Wid.(mm)	Overall dia.(mm)	Single Max. Load(kg)	DualMax. Load(kg)	Single(kPa)	Dual (kPa)	LI/SS	Second. LI/SS	Tread	
												mm	32nds
7.50R16 LT	14	6.00G	5.50F 6.50H	216	810	1500	1320	770	770	122/118L		16	20
7.50R20	14	6.0	6.50T 6.5	215	940	1900	1800	830	830	130/128K		14.5	18
8.25R16 LT	14	6.50H	6.00G 6.5	230	852	1700	1500	670	670	126/122L		14.5	18
8.25R16 LT	16	6.50H	6.00G 6.5	230	852	1800	1600	770	770	128/124L		14.5	18
8.25R20	14	6.5	6.50T 7.0	232	966	2240	2120	830	830	136/134K		15	19
9.00R20	16	7.0	7.00T 7.5	255	1022	2800	2650	900	900	144/142K		16	20
10.00R20	16	7.5	7.50V 8.0	274	1053	3000	2725	830	830	146/143K		17	21
10.00R20	18	7.5	7.50V 8.0	274	1053	3250	3000	930	930	149/146K		17	21
11.00R20	16	8.0	8.00V 8.5	288	1088	3350	3075	830	830	150/147K		17.5	22
11.00R20	18	8.0	8.00V 8.5	288	1088	3550	3250	930	930	152/149K		17.5	22
12.00R20	16	8.5	8.50V 9.0	313	1124	3550	3250	760	760	152/149K	HIGHLOAD	18	23
12.00R20	18	8.5	8.50V 9.0	310	1122	3750	3450	830	830	154/151K		18	23

AGC51



- Recommend to use
- Permitted
- Not recommended to use



Application:

All position, on/off road use;
Suitable for mix road and relatively poor road condition;
With great grip ability and excellent traction character;
Low heat generating character and excellent loading capacity.



Size	Ply Rating	Standard Rim	Permitted Rim	Section Wid.(mm)	Overall dia.(mm)	Single Max. Load(kg)	DualMax. Load(kg)	Single(kPa)	Dual (kPa)	LI/SS	Second. LI/SS	Tread	
												mm	32nds
6.50R16	12	5.50F	----	189	754	1060	925	670	670	110/105K		13	16
7.00R16	14	5.50F	6.00G	200	780	1320	1180	670	670	118/114L		14.5	18
7.50R16	14	6.00G	5.50F6.50H	216	810	1500	1320	770	770	122/118L		15	19
8.25R16	16	6.50H	6.00G 6.5	230	857	1700	1500	670	670	126/122L		16	20
12.00R24	20	8.5	8.50V/9.0	314	1222	4500	4125	900	900	160/157K		17.5	22
12.00R24	18	8.5	8.50V 9.0	314	1222	4250	3875	830	830	158/155K		17.5	22
12R22.5	18	9.00	8.25	300	1075	3550	3250	930	930	152/149L		18	23
13R22.5	18	9.75	9.00	316	1128	3750	3450	830	830	154/151L	156/150K	18	23
315/80R22.5	18	9.00	9.75	314	1081	3750	3450	830	830	154/151L	156/150K	16.5	21
315/80R22.5	20	9.00	9.75	314	1082	4125	3750	900	900	157/154L		16.5	21

HN509



- Recommend to use
- Permitted
- Not recommended to use

Application:

Drive wheel, on/off road use;
Suitable for low speed on poor road condition;
Excellent grip and traction characteristic;
Strong anti-wear and anti-puncture resistance characteristic;



Size	Ply Rating	Standard Rim	Permitted Rim	Section Wid.(mm)	Overall dia.(mm)	Single Max. Load(kg)	DualMax. Load(kg)	Single(kPa)	Dual (kPa)	LI/SS	Second. LI/SS	Tread	
												mm	32nds
12.00R20	18	8.5	8.50V 9.0	313	1135	3750	3450	830	830	154/151G		23	29

ON/OFF ROAD

HN596



- Recommend to use
- Permitted
- Not recommended to use

Application:

Drive wheel, on/off road use;
Suitable for transporting at low-speed on poor road (mining and forest farm)
Excellent grip and traction characteristic
Strong anti-wear and anti-puncture resistance characteristic.



Size	Ply Rating	Standard Rim	Permitted Rim	Section Wid.(mm)	Overall dia.(mm)	Single Max. Load(kg)	DualMax. Load(kg)	Single(kPa)	Dual (kPa)	LI/SS	Second. LI/SS	Tread	
												mm	32nds
11R22.5	16	8.25	7.50	277	1074	3000	2725	830	830	146/143G		26	33
11R24.5	16	8.25	7.50	282	1116	3250	3000	830	830	149/146G		26	33

ADC53 (HN353)



- Recommend to use
- Permitted
- Not recommended to use

Application:

Drive wheel, on/off road application;
Suitable for highway and mix road use;
M+S pattern, with good traction character;
Good anti-wearing character, long mileage;
Low heat generating.



Size	Ply Rating	Standard Rim	Permitted Rim	Section Wid.(mm)	Overall dia.(mm)	Single Max. Load(kg)	DualMax. Load(kg)	Single(kPa)	Dual (kPa)	LI/SS	Second. LI/SS	Tread	
												mm	32nds
10.00R20	16	7.5	7.50V 8.0	274	1055	3000	2725	830	830	146/143K		17.5	22
10.00R20	18	7.5	7.50V 8.0	274	1055	3250	3000	930	930	149/146K		17.5	22
11.00R20	16	8.0	8.00V 8.5	288	1090	3350	3075	830	830	150/147K		18.5	23
11.00R20	18	8.0	8.00V 8.5	288	1090	3550	3250	930	930	152/149K		18.5	23
11R22.5	16	8.25	7.50	277	1066	3000	2725	830	830	146/143L	148/145 K	22.5	28
11R24.5	16	8.25	7.50	282	1108	3250	3000	830	830	149/146L		22.5	28
12.00R20	22	8.5	8.50V 9.0	311	1130	4250	3875	970	970	158/159J		20.6	26
12.00R20	18	8.5	8.50V 9.0	310	1130	3750	3450	830	830	154/151K		20.6	26
12.00R24	18	8.5	8.50V 9.0	314	1228	4250	3875	830	830	158/155K		20.6	26
12.00R24	20	8.5	8.50V 9.0	314	1228	4500	4125	900	900	160/157K		20.6	26
12R22.5	16	9.00	8.25	300	1082	3350	3075	830	830	150/147L		19.5	25
12R22.5	18	9.00	8.25	300	1082	3550	3250	930	930	152/149L		19.5	25
13R22.5	18	9.75	9.00	316	1133	3750	3450	830	830	154/151K	156/150 G	20.6	26
275/70R22.5	18	8.25	9.00	272	975	3150	2900	900	900	148/145L		17.5	22
295/80R22.5	18	9.00	8.25	298	1055	3550	3250	900	900	152/149L		19	24
315/80R22.5	18	9.00	9.75	315	1088	3750	3450	830	830	154/150M	156/150 L	19.5	25
315/80R22.5	20	9.00	9.75	315	1088	4125	3750	900	900	157/154M		19.5	25

AGC28



- Recommend to use
- Permitted
- Not recommended to use

Application:

All position, on/off road use;
With powerful grip ability and excellent traction character;
Low heat generating character and excellent loading capacity.



Size	Ply Rating	Standard Rim	Permitted Rim	Section Wid.(mm)	Overall dia.(mm)	Single Max. Load(kg)	DualMax. Load(kg)	Single(kPa)	Dual (kPa)	LI/SS	Second. LI/SS	Tread	
												mm	32nds
10.00R20	16	7.5	7.50V 8.0	274	1060	3000	2725	830	830	146/143K		20	25
10.00R20	18	7.5	7.50V 8.0	274	1060	3250	3000	930	930	149/146K		20	25
215/75R17.5	18	6.00	6.75	215	766	2180	2060	830	830	135/133J		15.5	20
235/75R17.5	18	6.75	7.50	236	800	2725	2575	900	900	143/141J		16.5	21
245/70R17.5	18	7.50	6.75	252	790	2725	2575	900	900	143/141J	144/144F	16.5	21
255/70R22.5	16	7.50	8.25	254	932	2500	2300	830	830	140/137M	140/140 L	17.5	22
265/70R19.5	18	7.50	8.25	258	875	2725	2575	830	830	143/141J		17.5	22
275/70R22.5	18	8.25	9.00	272	968	3150	2900	900	900	148/145M		17.5	22
385/55R22.5	20	12.25	11.75	385	1010	4250	----	900	----	158L	160 K	16.8	21
385/65R22.5	18	11.75	12.25	385	1067	4250	----	830	----	158L	160K	16.8	21
385/65R22.5	20	11.75	12.25	385	1070	4500	----	900	----	160J		16.8	21
425/65R22.5	20	13.00	12.25	422	1118	5000	----	830	----	165 K		16.5	21
445/65R22.5	20	14.00	13.00	450	1148	5600	----	830	----	169K		16.5	21

HN352



- Recommend to use
- Permitted
- Not recommended to use

Application:

Drive wheel, on/off road use;
Suitable for relatively poor road;
With excellent traction character;
Long mileage and anti-puncture character.



Size	Ply Rating	Standard Rim	Permitted Rim	Section Wid.(mm)	Overall dia.(mm)	Single Max. Load(kg)	DualMax. Load(kg)	Single(kPa)	Dual (kPa)	LI/SS	Second. LI/SS	Tread	
												mm	32nds
13R22.5	18	9.75	9.00	316	1140	3750	3450	830	830	154/151K	156/150 G	24	30
315/80R22.5	18	9.00	9.75	315	1094	3750	3450	830	830	156/150K		23	29
315/80R22.5	20	9.00	9.75	315	1094	4125	3750	900	900	157/154K		23	29



Truck & BUS Radial Tyre

Tyre for mining or off road

Road character
Mainly used on mining area and relatively poor road surface

Application
Shorter distance, highly carrying capacity, extremely bad working conditions

TYRE FOR MINING OR OFF ROAD



HN10



- Recommend to use
- Permitted
- Not recommended to use

Application:
Drive wheel, on/off road use;
Suitable for relatively poor road surface application;
With excellent grip ability and traction character;
Low heat generating character and excellent loading capacity.



Size	Ply Rating	Standard Rim	Permitted Rim	Section Wid.(mm)	Overall dia.(mm)	Single Max. Load(kg)	DualMax. Load(kg)	Single(kPa)	Dual (kPa)	LI/SS	Second. LI/SS	Tread	
												mm	32nds
9.00R20	16	7.0	7.00T 7.5	255	1036	2800	2650	900	900	144/142F		22	28
10.00R20	16	7.5	7.50V 8.0	274	1064	3000	2725	830	830	146/143F		22	28
10.00R20	18	7.5	7.50V 8.0	274	1064	3250	3000	930	930	149/146F		22	28
11.00R20	16	8.0	8.00V 8.5	288	1098	3350	3075	830	830	150/147F		22	28
11.00R20	18	8.0	8.00V 8.5	288	1098	3550	3250	930	930	152/149F		22	28
11R22.5	16	8.25	7.50	277	1065	3000	2725	830	830	146/143G		22	28
12.00R20	18	8.5	8.50V 9.0	310	1136	3750	3450	830	830	154/151F		24	30
12.00R24	18	8.5	8.50V 9.0	314	1232	4250	3875	830	830	158/155F		23	29
12.00R24	20	8.5	8.50V 9.0	314	1232	4500	4125	900	900	160/157F		23	29
12R22.5	16	9.00	8.25	300	1085	3350	3075	830	830	150/147G		22	28
12R22.5	18	9.00	8.25	300	1085	3550	3250	930	930	152/149G		22	28
13R22.5	18	9.75	9.00	316	1136	3750	3450	790	790	154/151G	156/150 F	22.5	28

HN508



- Recommend to use
- Permitted
- Not recommended to use

Application:
Drive wheel, off road use;
Suitable and driving for relatively poor road surface application;
With excellent grip ability and traction character;
Low heat generating character and excellent loading capacity.



Size	Ply Rating	Standard Rim	Permitted Rim	Section Wid.(mm)	Overall dia.(mm)	Single Max. Load(kg)	DualMax. Load(kg)	Single(kPa)	Dual (kPa)	LI/SS	Second. LI/SS	Tread	
												mm	32nds
9.00R20	16	7.0	7.00T 7.5	255	1038	2800	2650	900	900	144/142F		23	29
10.00R20	18	7.5	7.50V 8.0	274	1068	3250	3000	930	930	149/146F		23.5	30
11.00R20	18	8.0	8.00V 8.5	288	1102	3550	3250	930	930	152/149F		24	30
12.00R20	18	8.5	8.50V 9.0	310	1140	3750	3450	830	830	154/151F		24.5	31



Truck & Bus Radial Tyre

Tyre for mining or off road

AGM84



- Recommend to use
- Permitted
- Not recommended to use

Application:

Trailer and driving wheel, off road use;
Wide tread footprint provides improved tread wear to extend tire life.
Large tread lugs provide grip for added attraction in on and off road conditions.
Special compounding in the tread void provides protection from punctures and stone penetration.
Excellent retread ability due to reduced stone penetration.



Size	Ply Rating	Standard Rim	Permitted Rim	Section Wid.(mm)	Overall dia.(mm)	Single Max. Load(kg)	DualMax. Load(kg)	Single(kPa)	Dual (kPa)	LI/SS	Second. LI/SS	Tread	
												mm	32nds
11R22.5	16	8.25	7.50	277	1074	3000	2725	830	830	146/143 G		26	33
11R24.5	16	8.25	7.50	282	1116	3250	3000	830	830	149/146 G		26	33

AGM88



- Recommend to use
- Permitted
- Not recommended to use

Application:

Trailer and driving wheel, off road use;
Suitable for transporting at low-speed on poor road, such as mining road;
With excellent grip ability and traction character;
Good self-cleaning, anti-wearing and anti-puncture characteristics.



Size	Ply Rating	Standard Rim	Permitted Rim	Section Wid.(mm)	Overall dia.(mm)	Single Max. Load(kg)	DualMax. Load(kg)	Single(kPa)	Dual (kPa)	LI/SS	Second. LI/SS	Tread	
												mm	32nds
10.00R20	18	7.5	7.50V 8.0	274	1072	3250	3000	930	930	149/146F		23.5	30
11.00R20	18	8.0	8.00V/8.5	290	1104	3550	3250	930	930	152/149F		24	30
12.00R20	18	8.5	8.50V 9.0	312	1138	3750	3450	830	830	154/151F		24.5	31
8.25R16LT	16	6.50H	6.00G 6.5	232	861	1800	1600	770	770	128/124J		16	20
9.00R20	16	7.0	7.00T 7.5	255	1038	2800	2650	900	900	144/142F		23	29

Truck & Bus Radial Tyre Tyre for winter grip

ASW80



● Recommend to use ● Permitted ● Not recommended to use

Application:

Steer wheel, suitable for icy and snowy road; High density of transverse three-dimensional groove design provides excellent grasp capacity. It has excellent antiskid performance- the unique design of tread compound rubber at low temperature flexibility; Holding good performance; Braking test - through the snow ice road tires.

Size	Ply Rating	Standard Rim	Permitted Rim	Section Wid.(mm)	Overall dia.(mm)	Single Max. Load(kg)	DualMax. Load(kg)	Single(kPa)	Dual (kPa)	LI/SS	Second. LI/SS	Tread	
												mm	32nds
315/70R22.5	18	9.00	9.75	311	1014	3450	3150	830	830	152/148M	154/150 L	16.5	21
315/80R22.5	18	9.00	9.75	314	1078	3750	3450	830	830	154/150M	156/150L	16.5	21
385/55R22.5	20	12.25	11.75	385	1004	4250	----	830	----	158L	160K	13.5	17
385/65R22.5	18	11.75	12.25	385	1070	4250	----	830	----	158L	160K	13.5	17

ADW80



● Recommend to use ● Permitted ● Not recommended to use

Application:

Drive wheel, suitable for snow road; High-density transverse grooves provide good anti-skid character; Special tread compound keep rubber softness in low temperature, with good grip character; M+S pattern, with good traction character and long mileage character.

Size	Ply Rating	Standard Rim	Permitted Rim	Section Wid.(mm)	Overall dia.(mm)	Single Max. Load(kg)	DualMax. Load(kg)	Single(kPa)	Dual (kPa)	LI/SS	Second. LI/SS	Tread	
												mm	32nds
295/80R22.5	18	9.00	8.25	298	1062	3550	3250	900	900	152/149L		24	29
315/70R22.5	18	9.00	9.75	312	1032	3450	3150	830	830	152/148M	154/150 L	24	29
315/80R22.5	18	9.00	9.75	315	1096	3750	3450	830	830	154/150M	156/150 L	24	29



Truck & Bus Radial Tyre Tyre for winter grip

ADW81



● Recommend to use ● Permitted ● Not recommended to use

Application:

Drive wheel, suitable for snow road;
High-density transverse grooves provide good anti-skid character;
Special tread compound keep rubber softness in low temperature, with good grip character;
M+S pattern, with good traction character and long mileage character.



Size	Ply Rating	Standard Rim	Permitted Rim	Section Wid.(mm)	Overall dia.(mm)	Single Max. Load(kg)	DualMax. Load(kg)	Single(kPa)	Dual (kPa)	L/SS	Second. L/SS	Tread	
												mm	32nds
11R22.5	16	8.25	7.50	277	1063	3000	2725	830	830	146/143M		20.6	26
11R24.5	16	8.25	7.50	282	1105	3250	3000	830	830	149/146M		20.6	26

ADW82



● Recommend to use ● Permitted ● Not recommended to use

Application:

Drive wheel, suitable for snow road;
High-density transverse grooves provide good anti-skid character;
Special tread compound keep rubber softness in low temperature, with good grip character;
M+S pattern, with good traction character and long mileage character.



Size	Ply Rating	Standard Rim	Permitted Rim	Section Wid.(mm)	Overall dia.(mm)	Single Max. Load(kg)	DualMax. Load(kg)	Single(kPa)	Dual (kPa)	L/SS	Second. L/SS	Tread	
												mm	32nds
225/70R19.5	14	6.75	6.00	227	814	1800	1700	760	760	128/126M		15.5	20
245/70R19.5	16	7.50	6.75	248	844	2180	2060	830	830	136/134M	136/135 J	16	20



Truck & BUS Radial Tyre

Tyres for intercity coach

Road character
 Mainly used on expressway and national highway
 Application
 Longer distance, Longer high speed
 Relatively less vehicles start and brake

TYRES FOR INTERCITY COACH



HN230+



- Not recommended to use
- Permitted
- Recommend to use

Application:
 Steer and trailer wheel, regional use or long distance use;
 Suitable for driving on good road condition;
 With excellent anti-side-skid character, low noise;
 Low rolling resistance and good high-speed character.



Size	Ply Rating	Standard Rim	Permitted Rim	Section Wid.(mm)	Overall dia.(mm)	Single Max. Load(kg)	DualMax. Load(kg)	Single(kPa)	Dual (kPa)	LI/SS	Second. LI/SS	Tread	
												mm	32nds
8.25R15 TR	18	6.5	6.0 7.0	236	836	2725	2575	850	850	143/141G	141/140 J	13	16
8.25R15 TR	18	6.5	6.0 7.0	236	836	2300	2240	860	860	137/136K		13	16
10.00R15 TR	18	7.5	7.0 8.0	283	924	3150	2900	850	850	148/145G	146/144 J	13.5	17
10.00R15 TR	18	7.5	7.0 8.0	283	924	3150	2900	860	860	148/145K		13.5	17
255/70R22.5	16	7.50	8.25	254	929	2500	2300	830	830	140/137M	140/140 L	14.5	18
275/70R22.5	18	8.25	9.00	272	964	3150	2900	900	900	148/145M		15	19

ASR35



- Not recommended to use
- Permitted
- Recommend to use

Application:
 Steer and trailer wheel for regional use;
 Suitable for driving on good condition;
 With excellent anti-side-skid character and drainage character.



Size	Ply Rating	Standard Rim	Permitted Rim	Section Wid.(mm)	Overall dia.(mm)	Single Max. Load(kg)	DualMax. Load(kg)	Single(kPa)	Dual (kPa)	LI/SS	Second. LI/SS	Tread	
												mm	32nds
6.50R16 LT	12	5.50F	----	189.7	753	1060	925	670	670	110/105L		12	15
7.00R15	12	5.50F	----	204	752	1150	1030	670	670	110/109M		12.5	16
7.00R16 LT	14	5.50F	6.00G	198	778	1320	1180	770	770	118/114L		12.5	16
7.50R15	14	6.00G	----	213	785	1500	1320	770	770	122/118M		12.5	16
7.50R16	14	6.00G	5.50F6.50H	198	782	1500	1320	770	770	122/118L		12.5	16
8.25R16	16	6.50H	6.00G 6.5	230	846	1700	1500	670	670	126/122M		14	18
205/75R17.5	14	6.00	5.25 6.75	208	754	1600	1500	760	760	124/122M		13	16
215/75R17.5	16	6.00	5.25 6.75	216	765	1750	1600	830	830	127/124M		13	16
215/75R17.5	18	6.00	5.25 6.75	216	765	2180	2060	830	830	135/133J		13	16
225/75R17.5	16	6.75	7.50	224	779	1850	1750	830	830	129/127M		13	16
235/75R17.5	16	6.75	7.50	235	793	2000	1850	830	830	132/129M		13	16
235/75R17.5	18	6.75	7.50	238	794	2725	2575	830	830	143/141J		13	16
245/70R17.5	18	7.50	6.75	251	787	2240	2120	900	900	136/134M		13	16



Tyres for intercity coach

HN257



- Not recommended to use
- Permitted
- Recommend to use

Application:

Steer and trailer wheel for regional use or long distance use;
 With excellent anti-side-skid character;
 Low heat generating, excellent high speed driving character;
 Wide tread design provides good long mileage and anti-wearing character.

Size	Ply Rating	Standard Rim	Permitted Rim	Section Wid.(mm)	Overall dia.(mm)	Single Max. Load(kg)	DualMax. Load(kg)	Single(kPa)	Dual (kPa)	LI/SS	Second. LI/SS	Tread	
												mm	32nds
10R22.5	14	7.50	6.75	248	1020	2575	2430	790	790	141/139M		14.5	18
10R22.5	16	7.50	6.75	248	1020	2800	2650	900	900	144/142M		14.5	18
11R22.5	14	8.25	7.50	277	1053	2800	2650	720	720	144/142M		15	19
11R22.5	16	8.25	7.50	277	1053	3000	2725	830	830	146/143M	148/145 L	15	19
11R24.5	14	8.25	7.50	288	1096	3000	2725	720	720	146/143M		15	19
11R24.5	16	8.25	7.50	290	1096	3250	3000	830	830	149/146M		15	19
12R22.5	16	9.00	8.25	301	1076	3350	3075	830	830	150/147M		16.5	21
12R22.5	18	9.00	8.25	302	1077	3550	3250	930	930	152/149M		16.5	21
255/70R22.5	16	7.50	8.25	250	926	2500	2300	830	830	140/137M	140/140 L	14.5	18
265/70R19.5	16	7.50	8.25	258	869	2500	2360	830	830	140/138M		13	16
275/70R22.5	18	8.25	9.00	272	963	3150	2900	900	900	148/145M		15	19
285/70R19.5	16	8.25	---	278	890	2650	2430	830	830	144/142M	145/143 L	14	18
295/60R22.5	18	9.00	9.75	288	917	3250	3000	900	900	149/146L	150/147 K	14.5	18
295/80R22.5	18	9.00	8.25	298	1046	3550	3250	900	900	152/149M		15.5	20
315/70R22.5	18	9.00	9.75	311	1016	3450	3150	830	830	152/148M	154/150 L	16.5	21
315/80R22.5	18	9.00	9.75	315	1082	3750	3450	830	830	154/150M	156/150 L	16.5	21
315/80R22.5	20	9.00	9.75	315	1083	4625	3750	900	900	161/154K	164/162 B	16.5	21



Truck & Bus Radial Tyre

Tyre for urban bus

Road character
Mainly used on urban road
Application
Shorter distance, lower running speed,
stop-and-go delivery

AGB20



- Not recommended to use
- Permitted
- Recommend to use

Application:

All position, urban road use;
 Strong carcass design provides long service life;
 Excellent anti-uneven wear character;
 Wide and depth pattern design provides good turning stability.



Size	Ply Rating	Standard Rim	Permitted Rim	Section Wid.(mm)	Overall dia.(mm)	Single Max. Load(kg)	DualMax. Load(kg)	Single(kPa)	Dual (kPa)	LI/SS	Second. LI/SS	Tread	
												mm	32nds
10R22.5	14	7.5	6.75	252	1029	2575	2430	790	790	141/139J		15	19
10R22.5	16	7.5	6.75	252	1029	2800	2650	900	900	144/142J		15	19
11R22.5	16	8.25	7.50	277	1062	3000	2725	830	830	148/145J		20	25
215/75R17.5	16	6.00	6.75	215	766	1750	1600	830	830	127/124M		13	16
215/75R17.5	18	6.00	6.75	215	766	2180	2060	830	830	135/133J		13	16
275/70R22.5	18	8.25	9.00	272	974	3150	2900	900	900	148/145J	152/148E	20	25
295/80R22.5	18	9.00	8.25	298	1056	3550	3250	900	900	152/149J	154/150E	20	25

AGB21 (HN223)



- Not recommended to use
- Permitted
- Recommend to use

Application:

All position, urban road use,
 Suitable for high speed on good road condition
 Long service life and great anti-uneven-wear character.



Size	Ply Rating	Standard Rim	Permitted Rim	Section Wid.(mm)	Overall dia.(mm)	Single Max. Load(kg)	DualMax. Load(kg)	Single(kPa)	Dual (kPa)	LI/SS	Second. LI/SS	Tread	
												mm	32nds
7.50R20	14	6.0	6.50T 6.5	215	936	1900	1800	830	830	130/128L		12.5	16
8R22.5	14	6.0	-----	206	939	1900	1800	830	830	130/128M		12.5	16
9R22.5	14	6.75	6.00 7.50	228	962	2240	2120	830	830	136/134M		14.5	18
10R22.5	14	7.50	6.75	258	1022	2575	2430	790	790	141/139M		14.5	18
10R22.5	16	7.50	6.75	258	1022	2800	2650	900	900	144/142M		14.5	18
11R22.5	16	8.25	7.50	277	1051	3000	2725	830	830	146/143M	148/145 L	16	20
295/80R22.5	18	9.00	8.25	298	1050	3550	3250	900	900	152/149M		17	21

AGB22



- Not recommended to use
- Permitted
- Recommend to use

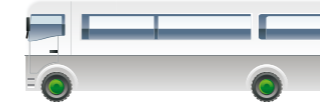
Application:

All position, urban road use;
 Great width of tread running surface provides perfect stability and anti-wear performance;
 Groove bottom protectors help to defend against stone drilling and improve retread performances;
 The tread sipes help the heat dissipation, and reduce the noise;
 Four grooves, provides excellent wet handling performance and perfect heat dissipation performance;
 High wear resistance compound ensures much longer mileage.



Size	Ply Rating	Standard Rim	Permitted Rim	Section Wid.(mm)	Overall dia.(mm)	Single Max. Load(kg)	DualMax. Load(kg)	Single(kPa)	Dual (kPa)	LI/SS	Second. LI/SS	Tread	
												mm	32nds
275/70R22.5	18	8.25	9.00	272	966	3150	2900	900	900	148/145J	152/148E	18	23
305/70R22.5	16	9.00	8.25	303	996	3550	3150	900	900	152/148J	154/150E	19	24

ADB20



- Not recommended to use
- Permitted
- Recommend to use

Application:

Drive wheel, urban road use;
 High wear resistance performance provides good traction performance;
 The optimized footprint provides the good handling performance and the long life use;
 Special stone ejector platforms design, prevent the road hazard



Size	Ply Rating	Standard Rim	Permitted Rim	Section Wid.(mm)	Overall dia.(mm)	Single Max. Load(kg)	DualMax. Load(kg)	Single(kPa)	Dual (kPa)	LI/SS	Second. LI/SS	Tread depth	
												mm	32nds
11R22.5	16	8.25	7.50	281	1064	3000	2725	830	830	148/145J	151/148E	20.6	26
275/70R22.5	18	8.25	9.00	279	975	3150	2900	900	900	148/145J	152/148E	18	23

USAGE & MAINTENANCE

Tyre Pressure

- The working pressure of tyres should be in accordance with the current national standard and the intended application.
- It's necessary to regularly inspect for air leakage, treating any leakage in a timely manner.
- Ensure that the air pressure is normal. For prolonged continuous use, tyre pressure should be regularly checked; if vehicle is not operated for more than six months, tyre inspection is recommended.
- Do not bleed or inflate tyre while hot as this may result in either insufficient or excessive pressure.
- Ensure that dual tyres and coaxial tyres are maintained at the same pressure.
- The spare tyre should be regularly inspected and maintained in a usable state.

Proper Tyre Inflation

- Proper inflation ensures tyre tread remains fully in contact with the road surface, improving traction, braking performance and safety.

The Adverse Effects of Under-Inflation:

- Increased possibility of tyre damage, thus reduced safety.
- Reduced tyre durability; thereby reducing the possibility ability to retread.
- Increased rolling resistance of the tyre, resulting in reduced fuel economy.

Loading

- The load on tyres should be in accordance with the current national standards; avoid overloading.
- Overloading will shorten tyre life. Overloaded Tyres will build up heat quickly, causing damage, including shoulder separation and bead explosion.
- Tyres with high ply rating or bearing heavy load should not be run at high speed for prolonged periods.
- Cargo load should be distributed load in order to avoid uneven load over a single tyre.

Unfavorable Effects of tire Over-Inflation:

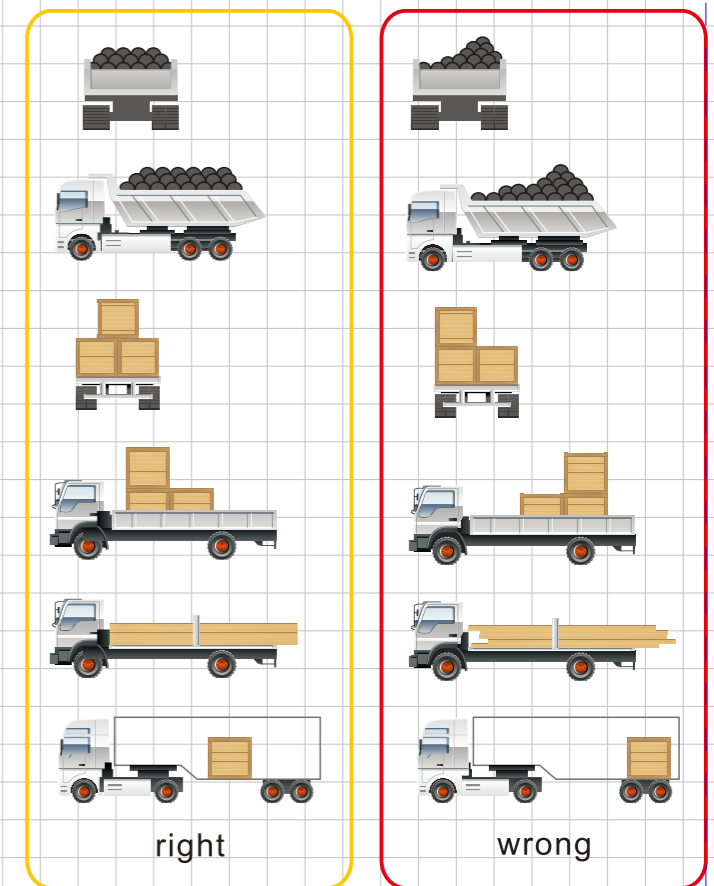
- Reduced tyre life, especially the Drive tyre.
- Crown of the tyre more easily to bruised, resulting in chip and chunking.
- Reduced ride the comfort.
- Reduced grip.
- Reduced the durability; thereby reducing the ability to retread.



Tyre tread and the road holding area

Tyre Care Techniques

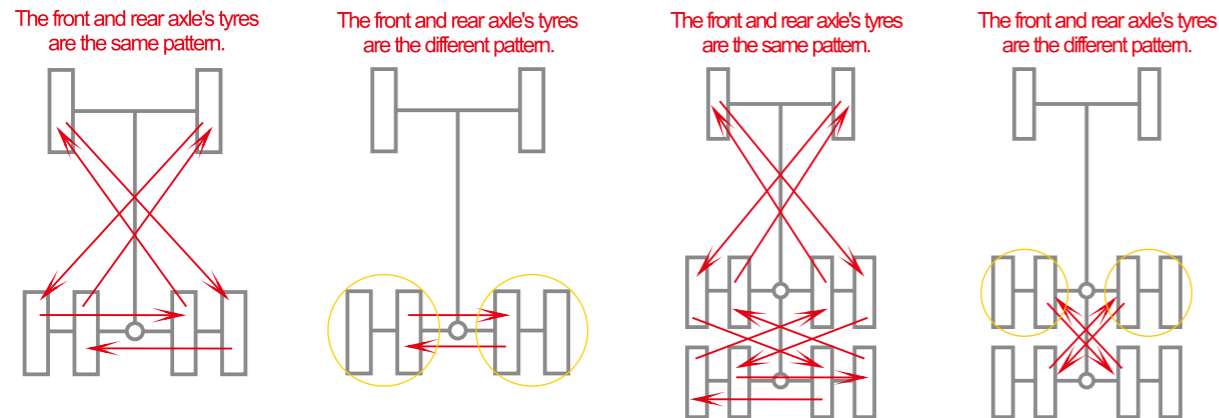
- If the vehicle is operated at high speed for a long distance, it should be stopped periodically to allow tyre heat to dissipate. Do not spray with cool water to reduce heat.
- The vehicle should avoid sudden acceleration, emergency brake and sharp turns.
- Take care to prevent excessive speeds and, overloading.
- In poor road conditions, drive more slowly to avoid tyres being impacted by sharp objects.
- Tyres should be inspected often, with any damage found repaired immediately.
- A tyre should be replaced as soon as the tyre is worn to the wear mark.
- A retreaded tyre should not be used as Steering tyre to ensure security of the vehicle.
- After driving at high speed for 1-2 hours, it is recommended to rest 15-20 minutes and check the tyres.



USAGE & MAINTENANCE

Rotation

- Generally, front wheels under the influence of brakes, are more prone to uneven wear. Rear positions, especially the Drive position, wear more quickly than Steer tyres due to heavy loads. Refer to the figure below for tyre rotation method.



Braking System

- Improper balance or components fault may lead to pneumatic brake breakdown, causing uneven tyre wear and damage.

Fault	Possible Reasons	Result
Excess heat caused by braking	<ol style="list-style-type: none"> 1. Improper shift on downhill leading to rapid heat buildup. 2. Repeatedly start and stop with no time for cool down. 3. Improper adjustment causing one or more brakes to exert too much force. 	Tyre bead damage —, initially, the bead deformation, then bead wire separates from the bead ring.
Brake lock	<ol style="list-style-type: none"> 1. Traction and braking system Failures. 2. The bleeder valve bleeds air too slow. 3. Slack adjuster is misadjusted. 4. Brake drum deviation. 	Irregular wear of the tyre tread.

The Suspension System

- Suspension systems connect truck and tyre, provide important support for the tyre performance. The suspension system must support rig and cargo load, and keep the vehicle in proper alignment. If the suspension system is working properly, the running track of the vehicle will be straight, and load distribution even, allowing for slower the tyre wear, and reduced unit mileage costs. Suspension systems are moving parts that are subject to wear. Worn or fractured suspension components are the main cause of uneven tyre wear.

