

PRODUCT RANGE

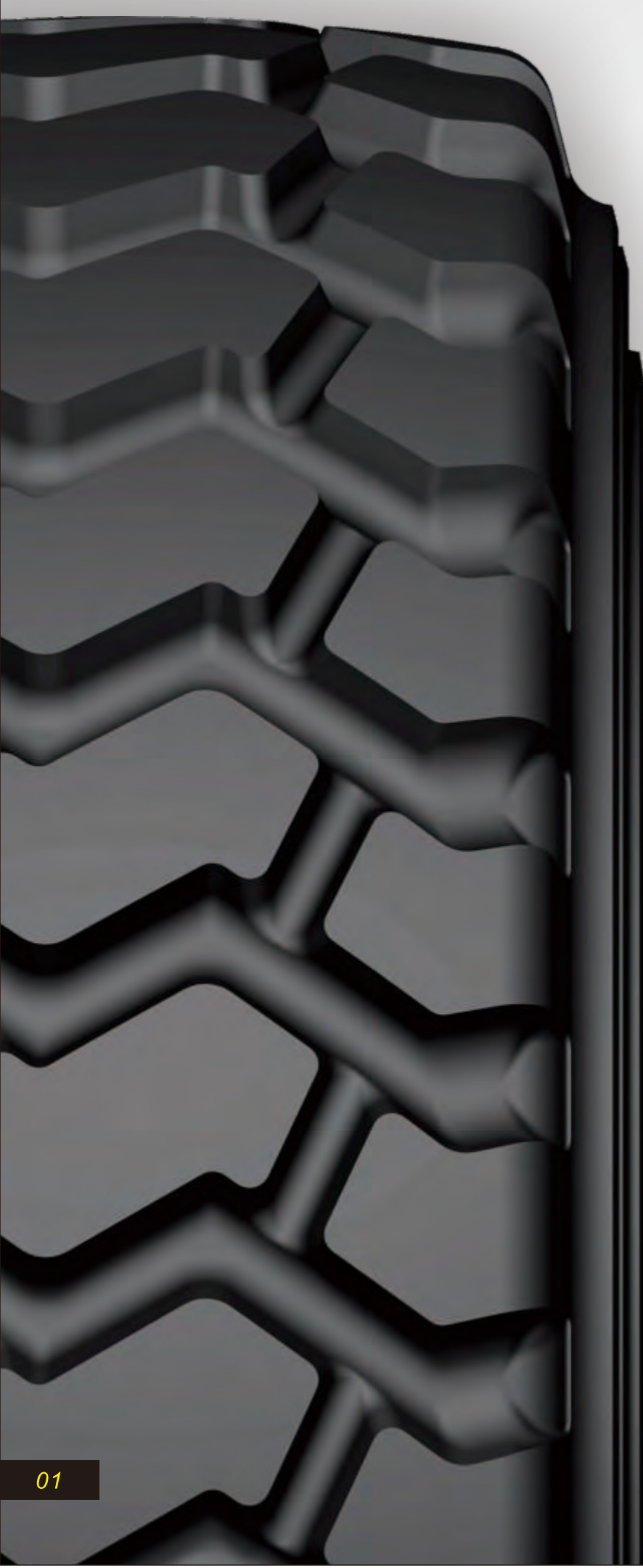
OFF-THE-ROAD TYRES



HANKSUGI JAPAN TIRE LTD. B26B, THE REGALIA BLDG. NO.29
XIANCHENG RD. PUDONG NEW AREA, SHANGHAI CHINA 200122.
PHONE CHINA: +86 21 50813651 PHONE USA: +1 561 340 9030

WWW.AEOLUSTIRES.CO

AEOLUS TYRES
Technology Meets Performance



PRODUCT RANGE

OFF-THE-ROAD TYRES

LOADER, DOZER AND UNDERGROUND MACHINE	03
TRANSPORT MACHINE	09
GRADER	15
INDUSTRIAL APPLICATION	17
HIGH SPEED VEHICLE	19
COMPACTOR SERVICE	20
FLOTATION TYRE	21
SAND SERVICE	22
TRACTOR INDUSTRIAL TYRES	23
MPT	25
SKIDSTEER /EXCAVATOR	26

PRODUCT RANGE

LOADER, DOZER AND UNDERGROUND MACHINE

PRODUCT RANGE

LOADER, DOZER AND UNDERGROUND MACHINE



LOADER, DOZER AND UNDERGROUND MACHINE



A SNOW / L2



AL36 / L3



AL37 / L3



AE39 / L3



AL53 / L5



AL55 / L5



AL58 / L5



AL59 / L5



AS50 / L5S

RADIAL



SIZE	TYPE	A SNOW L2	AL36 L3	AL37 L3	AE39 L3	AL53 L5	AL55 L5	AL58 L5	AL59 L5	AS50 L5S
15.5 R25 **	TL		●							
17.5 R25 **	TL	●	●	●		●				●
18.00 R25 **	TL									●
20.5 R25 **	TL	●	●	●		●		●	●	
23.5 R25 **	TL	●	●	●		●			●	●
26.5 R25 **	TL		●	●		●			●	●
29.5 R25 **	TL			●		●				●
650/65 R25 *	TL				●					
750/65 R25 *	TL				●					
35/65 R33 **	TL					●	●		●	

PRODUCT RANGE

LOADER, DOZER AND UNDERGROUND MACHINE

PRODUCT RANGE

LOADER, DOZER AND UNDERGROUND MACHINE



LOADER, DOZER AND UNDERGROUND MACHINE



G-2 / L2 / L3



G-13 / L2



G-3 / L3



G-12 / L3 / L4



G-14 / L3



G-15 / L3



G-26 / L3



G-1A / L4S / L5S



G-24 / L5

BIAS



SIZE	TYPE	G-2	G-13	G-2	G-3	G-12	G-14	G-15	G-26	G-12	G-1A	G-24	G-1A
		L2	L2	L3	L3	L3	L3	L3	L3	L4	L4S	L5	L5S
10.00 -20	TT			●							●		
12.00 -20	TT												●
12.00 -24	TT			●							●		●
14.00 -24	TL/TT					●					●		
15.5 -25	TL/TT		●			●							
17.5 -25	TL/TT		●			●			●			●	●
18.00 -25	TL	●											●
20.5 -25	TL/TT		●		●		●		●			●	
23.5 -25	TL/TT		●			●		●	●			●	●
26.5 -25	TL					●			●	●		●	●
29.5 -25	TL					●						●	●
29.5 -29	TL					●			●	●		●	●
45/65 -45	TL											●	

PRODUCT RANGE

LOADER, DOZER AND UNDERGROUND MACHINE

PRODUCT RANGE

LOADER, DOZER AND UNDERGROUND MACHINE



LOADER, DOZER AND UNDERGROUND MACHINE



G-21 / L2



G-12A / L3



G-16 / L3



AL368 / L3



AL369 / L3



AL388 / L3



G-1A / L3S



G-24 / L4



AL458 / L4



G-25 / L5



BIAS



SIZE	TYPE	G-21	G-12A	G-16	AL368	AL369	AL388	G-1A	G-24	AL458	G-25
		L2	L3	L3	L3	L3	L3	L3S	L4	L4	L5
16/70 -20	TT		●	●							
18 -20	TT	●									
16/70 -24	TT		●								
17.5 -25	TT					●	●				
23.5 -25	TT				●	●	●			●	
35/65 -33	TL								●		●



SIZE	TYPE	AL36	AL37	AE33	AE35	AE37	AE39	AE41	AE43	AE45	AE46	AE47	AE48	AE49
		E3	E3	E3	E3	E3	E3	E4	E4	E4	E4	E4	E4	E4
14.00 R20 ***	TL/TT			●				●						
12.00 R24 ***	TT													
14.00 R24 ***	TL/TT			●										
13.00 R25 ***	TL			●	●									
14.00 R25 ***	TL/TT			●	●									
15.5 R25 **	TL	●												
16.00 R25 **	TL			●										
17.5 R25 **	TL	●	●											
18.00 R25 **	TL								●					
20.5 R25 **	TL	●	●									●		
23.5 R25 **	TL	●	●									●		
26.5 R25 **	TL	●	●									●		
29.5 R25 **	TL		●									●		
550/65 R25 **	TL					●								
650/65 R25 **	TL						●							
750/65 R25 **	TL						●							
18.00 R33 **	TL									●			●	
21.00 R35 **	TL													●
24.00 R35 **	TL									●				
27.00 R49 **	TL										●			



AE35 / E3



AE37 / E3



AE39 / E3



AE41 / E4



AE43 / E4



AE45 / E4



AE46 / E4



AE47 / E4



AE48 / E4



AE49 / E4



RADIAL



AL36 / E3



AL37 / E3



AE33 / E3

TRANSPORT MACHINE



G-4D / E3/E4



G-5 / E3



G-6 / E3



G-4A / E4



G-4C / E4



G-4E / E4



G-29 / E7



Q-4N



BIAS



SIZE	TYPE	G-4D E3	G-5 E3	G-6 E3	G-4D E4	G-4A E4	G-4C E4	G-4E E4	G-29 E7	Q-4N
16.00 -20	TL/TT								●	
18 -22.5	TL									●
14.00 -24	TT		●							
13.00 -25	TT		●	●						
14.00 -25	TT		●							
18.00 -33	TL					●				
21.00 -35	TL						●			
24.00 -35	TL					●				
27.00 -49	TL						●	●		
36.00 -51	TL	●			●					



BIAS



SIZE	TYPE	G-10 E3	G-12 E3	G-34 E3	G-26 E3	G-11A E4	G-12 E4	G-31 E4	G-35 E4	G-4B E4	Q-10	Q-22	AM1
11.00 -20	TT											●	
12.00 -20	TT											●	●
14.00 -20	TT										●		
12.00 -24	TT							●					
14.00 -24	TT		●										
16.00 -24	TL		●										
16.00 -25	TL/TT		●							●			
18.00 -25	TL/TT	●					●						
29.5 -25	TL			●									
21.00 -33	TL/TT		●						●				
21.00 -35	TL					●			●				
24.00 -35	TL		●						●				
37.25 -35	TL		●		●								
24.00 -49	TL								●				
30.00 -51	TL		●										
33.00 -51	TL								●				



G-10 / E3



G-12 / E3 / E4



G-34 / E3



G-26 / E3



G-11A / E4



G-31 / E4



G-35 / E4



G-4B / E4



Q-10



Q-22



AM1



GRADER

BIAS



SIZE	TYPE	G-13	AL216	G-3	G-12	G-14	G-26
		L2	L2	L3	L3	L3	L3
13.00 -24	TL/TT	●					
14.00 -24	TL/TT	●					
15.5 -25	TL/TT	●			●		
17.5 -25	TL/TT	●	●		●		
20.5 -25	TL/TT	●		●		●	●
23.5 -25	TL/TT	●			●		●



G-13 / L2



AL216 / L2



G-3 / L3



G-12 / L3



G-14 / L3



G-26 / L3



RADIAL



A SNOW / G2

AGR20 / G2

SIZE	TYPE	A SNOW	AGR20
		G2	G2
14.00 R24 **	TL	●	●
17.5 R25 **	TL	●	
20.5 R25 **	TL	●	
23.5 R25 **	TL	●	



BIAS



G-12 / E3



G-30 / E3



G-33 / L3



G-31 / E4



G-30 / E4



AIN31 / IND-3

RADIAL



AIN46 / IND4

SIZE	TYPE	AIN46 IND4
14.00 R24 ***	TL	●
16.00 R25 ***	TL	●
18.00 R25 ***	TL	●
18.00 R33 ***	TL	●

SIZE	TYPE	G-12	G-30	G-33	G-31	G-30	AIN31
		E3	E3	L3	E4	E4	IND-3
12.00 -20	TT						●
12.00 -24	TT				●		
14.00 -24	TL/TT				●		
16.00 -25	TL	●					
18.00 -25	TL					●	
21.00 -25	TL	●					
26.5 -25	TL			●			
18.00 -33	TL					●	
21.00 -35	TL		●				



HIGH SPEED VEHICLE



COMPACTOR SERVICE

BIAS



SIZE	TYPE	G-1B	G-9	G-7B	G-23
		C1	L3	E7	E7
9.00 -20	TL/TT	●			
11.00 -20	TL/TT	●			
13/80 -20	TL/TT	●			
16.00 -20	TL/TT			●	
18.00 -24	TL/TT		●		
20.5 -25	TL/TT				●
23.1 -26	TL/TT				●

RADIAL



SIZE	TYPE	AR25	AR28
		E2	E2
14.00 R24 ***	TL	●	
14.00 R25 ***	TL	●	
16.00 R25 ***	TL	●	
17.5 R25 ***	TL	●	
20.5 R25 ***	TL	●	
385/95 R25 ***	TL		●
445/95 R25 ***	TL		●



AR28 / E2



AR25 / E2



G-1B / C1



G-9 / L3



G-7B / E7



G-23 / E7



RADIAL

BIAS

SIZE	TYPE	AE73	AE74	AE77
		E7		E7
16.00R20 *	TL	●		
525/65 R20.5 *	TL			●
24 R20.5 *	TL			●
560/60 R22.5 *	TL		●	
445/65 R22.5 *	TL			●

SIZE	TYPE	G-7A	G-7B	G-18	G-19	G-20	G-29	AE71	AE75
		E7	E7	E7		E7	E7	E7	E7
16.00 -20	TL/TT		*				●		●
18 -20	TL/TT			●					
20 -20	TL/TT			●			●		
22 -20	TL/TT	●		●					
24 -21	TL					●		●	
21.00 -25	TL							●	
29.5 -25	TL			●					
66*43.00-25	TL				●				



AE73 / E7



AE74



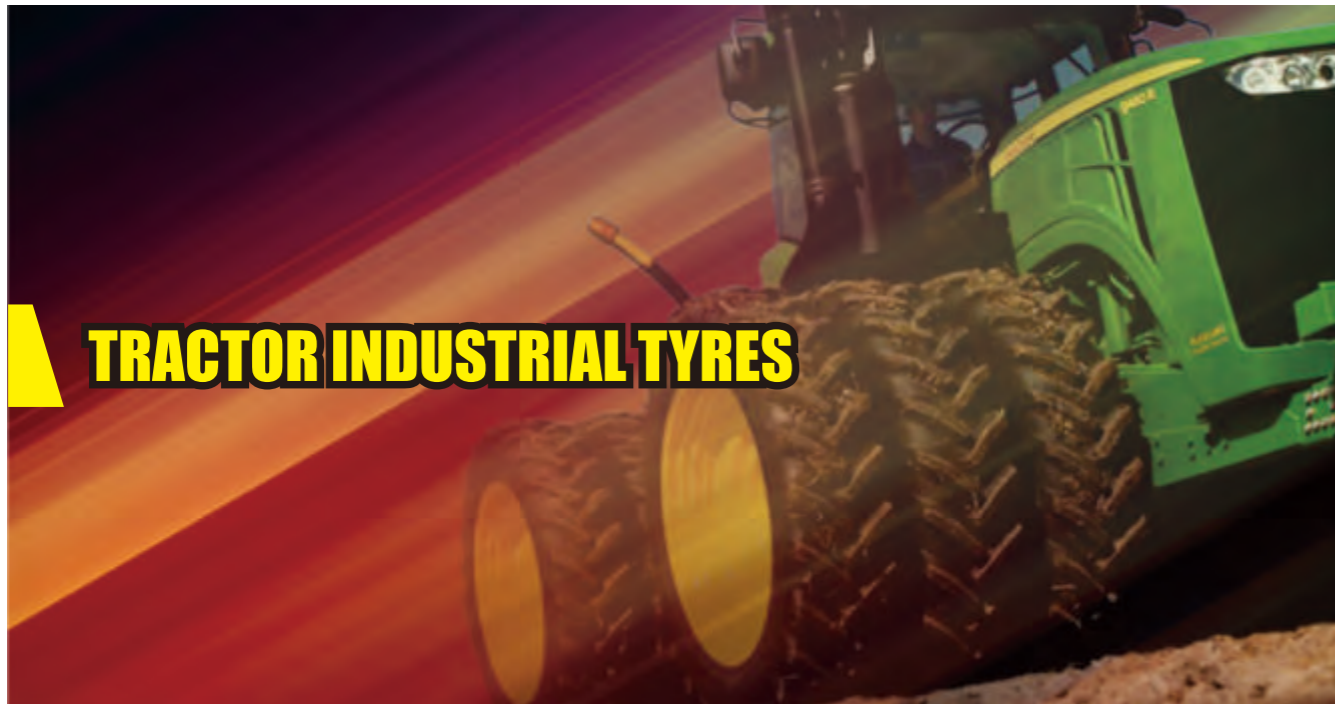
AE77 / E7



G-7A / E7 G-7B / E7 G-18 / E7 G-19



G-20 / E7 G-29 / E7 AE71 / E7 AE75 / E7



TRACTOR INDUSTRIAL TYRES

BIAS



SIZE	TYPE	R-1B	R-3	R-4	AR128	AR126	AR129	AR158
		R-1	R-3	R-4	R-1	R-1	R-1	R-1
8.3 -20	TT					●		
8.3 -24	TT					●		
9.5 -24	TT					●		
11.2 -24	TT/TL	●				●		
13.6 -24	TT	●				●		
14.9 -24	TL			●				
15 -24	TT							●
16.9 -24	TL			●				
19.5L -24	TL			●				
14.9 -26	TT	●					●	
18.4 -26	TL			●				
23.1 -26	TL	●	●					
11.2 -28	TL	●						
12.4 -28	TL				●			
16.9 -28	TL	●		●				
14.9 -30	TL	●					●	
16.9 -30	TL	●						
18.4 -30	TL	●						
16.9 -34	TL	●						
18.4 -34	TL	●						
18.4 -38	TL	●						



R-3



R-4



AR128



AR126



AR129



AR158



R-1B



PRODUCT RANGE

MPT



MPT

RADIAL

SIZE	TYPE	AMP35	AGP23	AE77	AMP39	AMP33
14.00 R20-20	TT				●	
395/85R20-20	TT					●
425/85R21-20	TT				●	
445/65R22.5 *	TL		●	●		
460/70R24 **	TL	●				
500/70R24 **	TL	●				



AMP35



AGP23



AE77



AMP39



AMP33

PRODUCT RANGE

SKIDSTEER / EXCAVATOR

SKIDSTEER



BIAS



SIZE	TYPE	IN-4	AS26	AL266
10 -16.5	TL		●	
12 -16.5	TL	●		
14 -17.5	TL		●	
12.5/80-18	TL			●



IN-4



AS26

EXCAVATOR



BIAS



SIZE	TYPE	AEX1
10.00 -20	TL/TT	●



AEX1